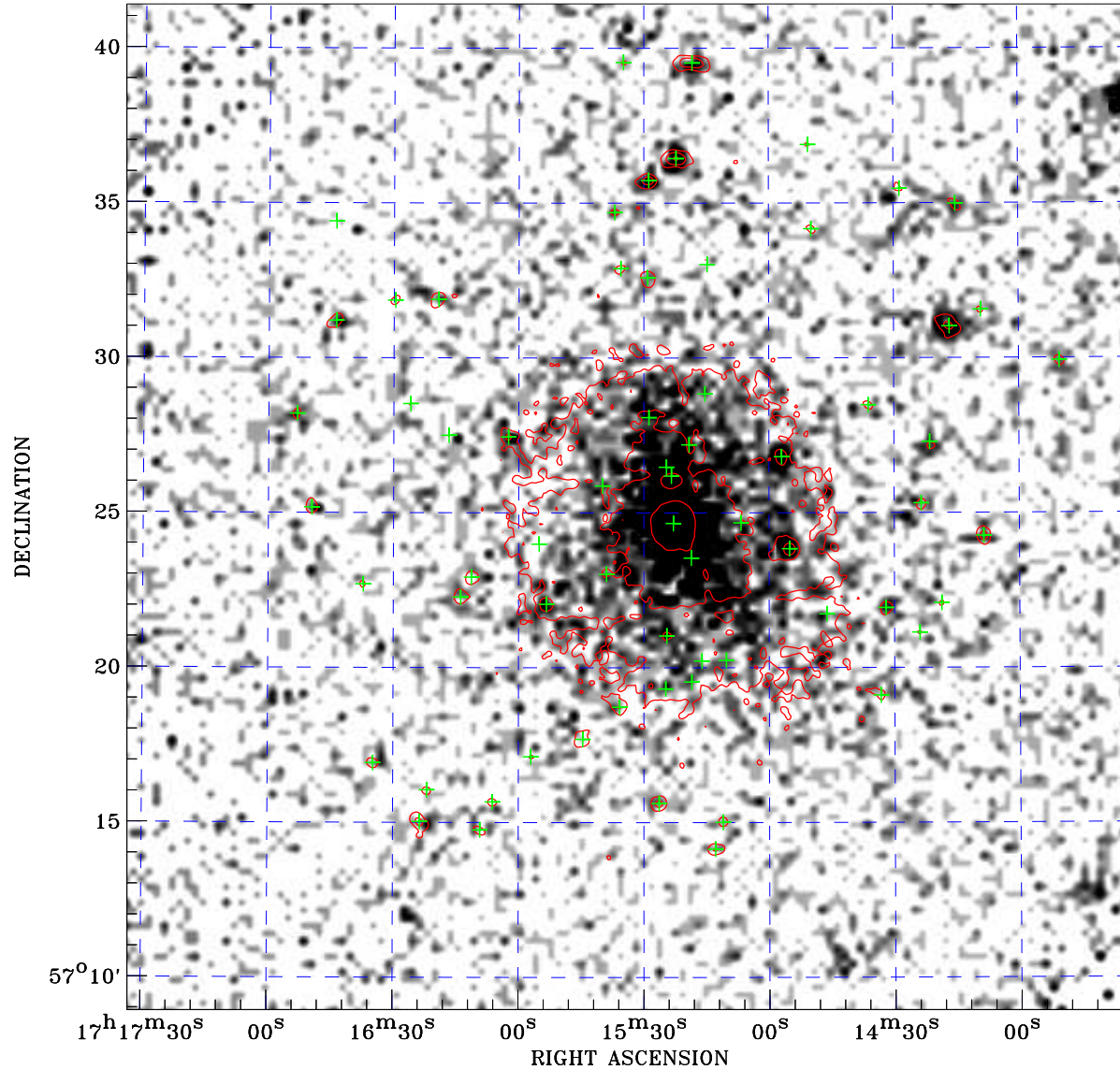


PDF XMM ROSAT image ACDS V10.0



Principal Investigator :
Dr Lorenzo Lovisari

XMM target name :
NGC6338

Observation ID :
0741580101

Epic image :

α : 17 15 33.35
 δ : +57 25 12.0

Energy band : 0.2–12.0 keV

MOS1 : 12210 s
MOS2 : 12194 s
PN : 10559 s

Contour levels (counts) :
 2σ :1.698E+00 7σ :4.754E+00
 30σ :1.882E+01

Nearest ROSAT image
from Epic image center :
Observation : 600425p
Instrument : PSPCB
 α : 17 15 43.89
 δ : +57 22 47.6

Other ROSAT images :
None

XMM SSC
Apr 22 11:30:15 2019

⊙ Epic image contour
levels at 2, 7 and 30 σ

+ Detected Epic sources