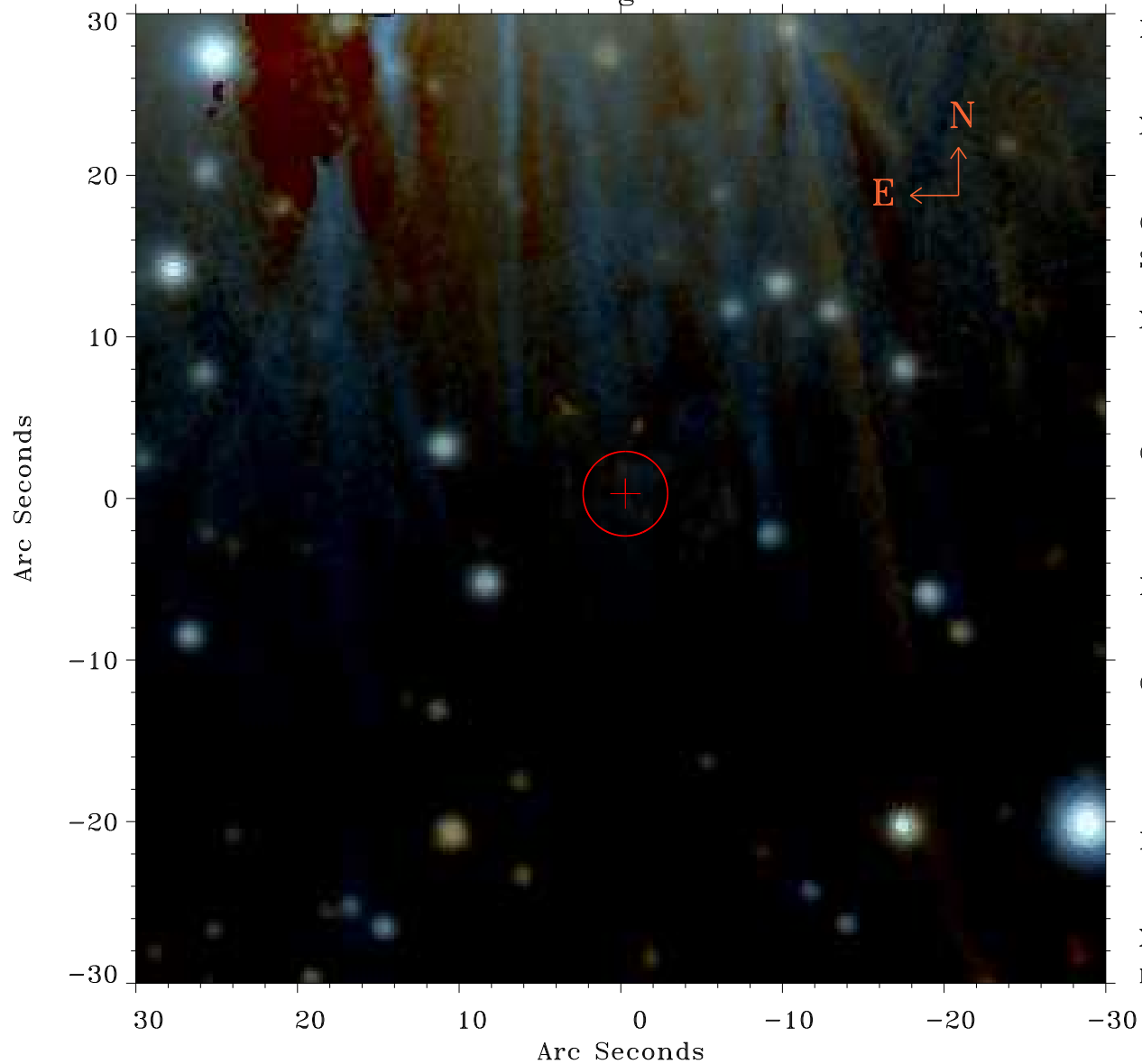


# EPIC source finding chart ACDS V10.0



Principal Investigator :

Dr Fabio Favata

XMM target name :

61 Cyg

OBS ID : 760290601

Source number : 20

X-ray coordinates :

$\alpha$  : 21 06 58.34

$\delta$  : +38 44 08.7

Center coordinates :

$\alpha$  : 21 06 58.34

$\delta$  : +38 44 08.6

Plate reference :

Origin : PanSTARRS-DR1

Color coding :

z band ●

(z+g)/2 ●

g band ●

Error:

R90 : 2.6 arsec

XMM SSC

May 1 21:53:37 2019