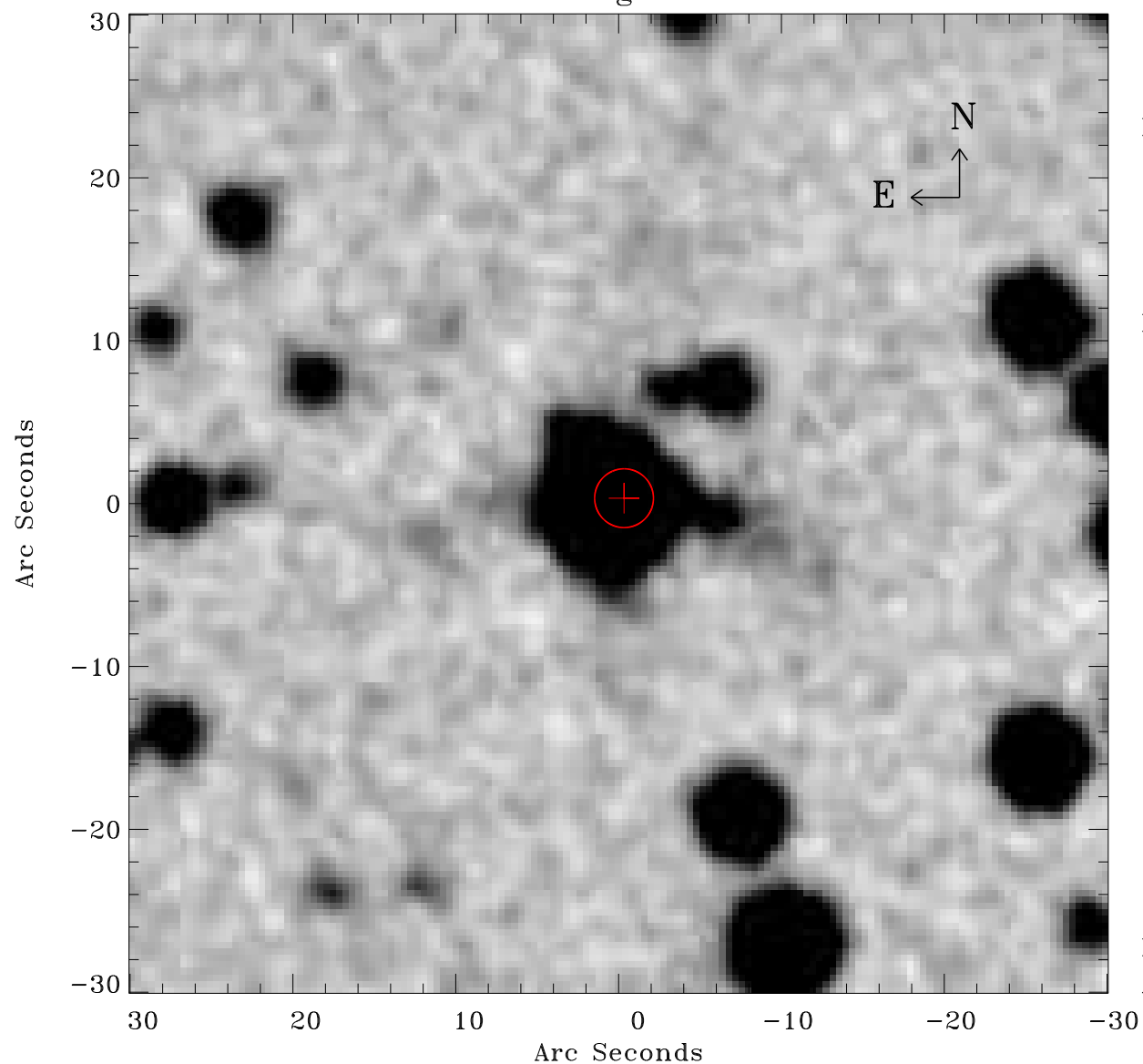


# EPIC source finding chart ACDS V10.0



Principal Investigator :

Dr Michael Koss

XMM target name :

NGC 4785

OBS ID : 762920701

Source number : 12

X-ray coordinates :

$\alpha$  : 12 54 12.06

$\delta$  : -48 44 11.6

Center coordinates :

$\alpha$  : 12 54 12.05

$\delta$  : -48 44 11.5

Plate reference :

Origin : CDS HIPs Network

Plate : MAMA srcj

Pixel : 0.40 "/pix

Error circle :

$R_{90}$  (") : 1.8

XMM SSC

Apr 22 16:27:03 2019