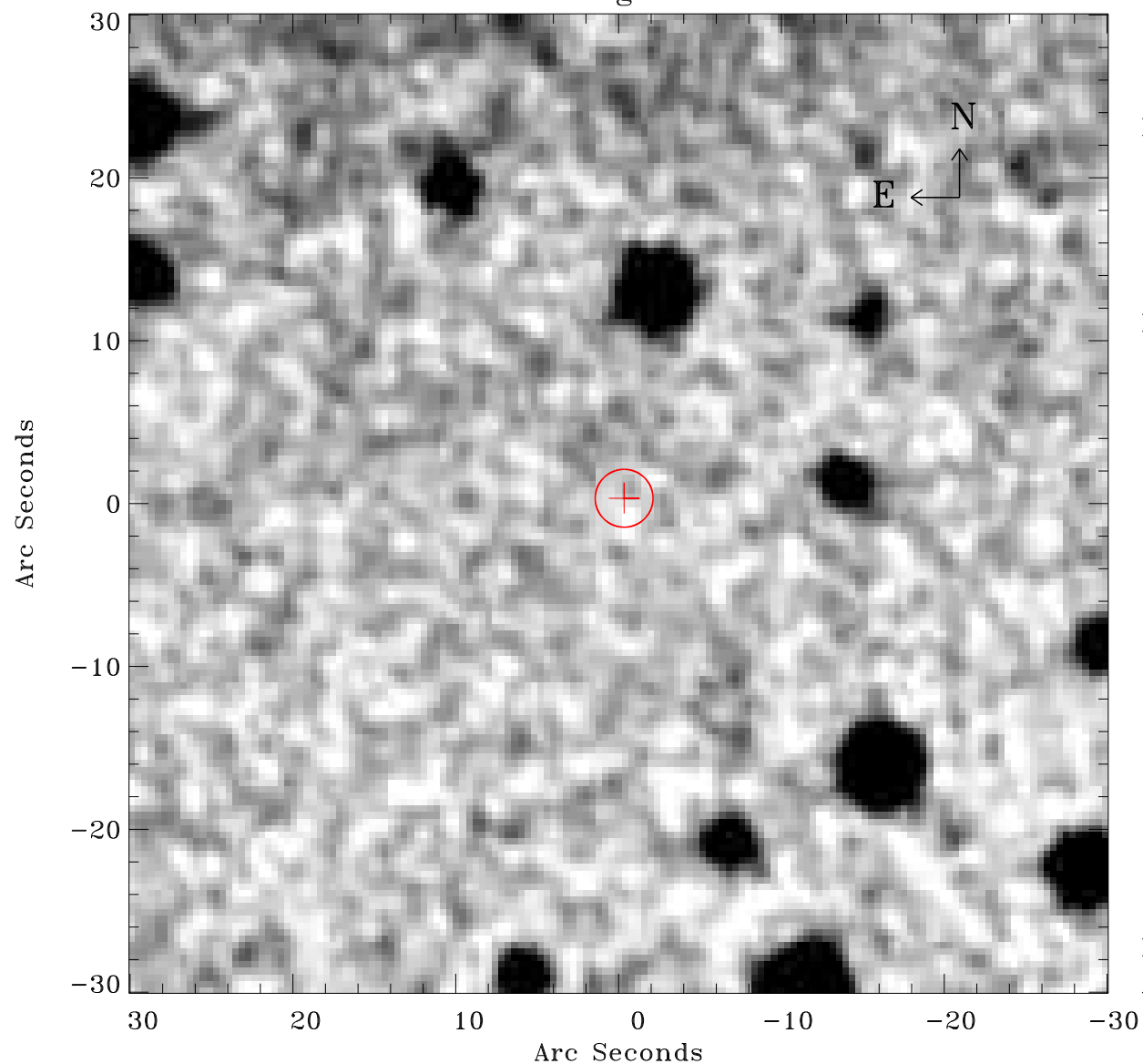


EPIC source finding chart ACDS V10.0



Principal Investigator :

Dr Michael Koss

XMM target name :

NGC 4785

OBS ID : 762920701

Source number : 18

X-ray coordinates :

α : 12 53 24.51

δ : -48 46 01.0

Center coordinates :

α : 12 53 24.51

δ : -48 46 00.9

Plate reference :

Origin : CDS HIPs Network

Plate : MAMA srcj

Pixel : 0.40 "/pix

Error circle :

R_{90} (") : 1.8

XMM SSC

Apr 22 16:25:41 2019