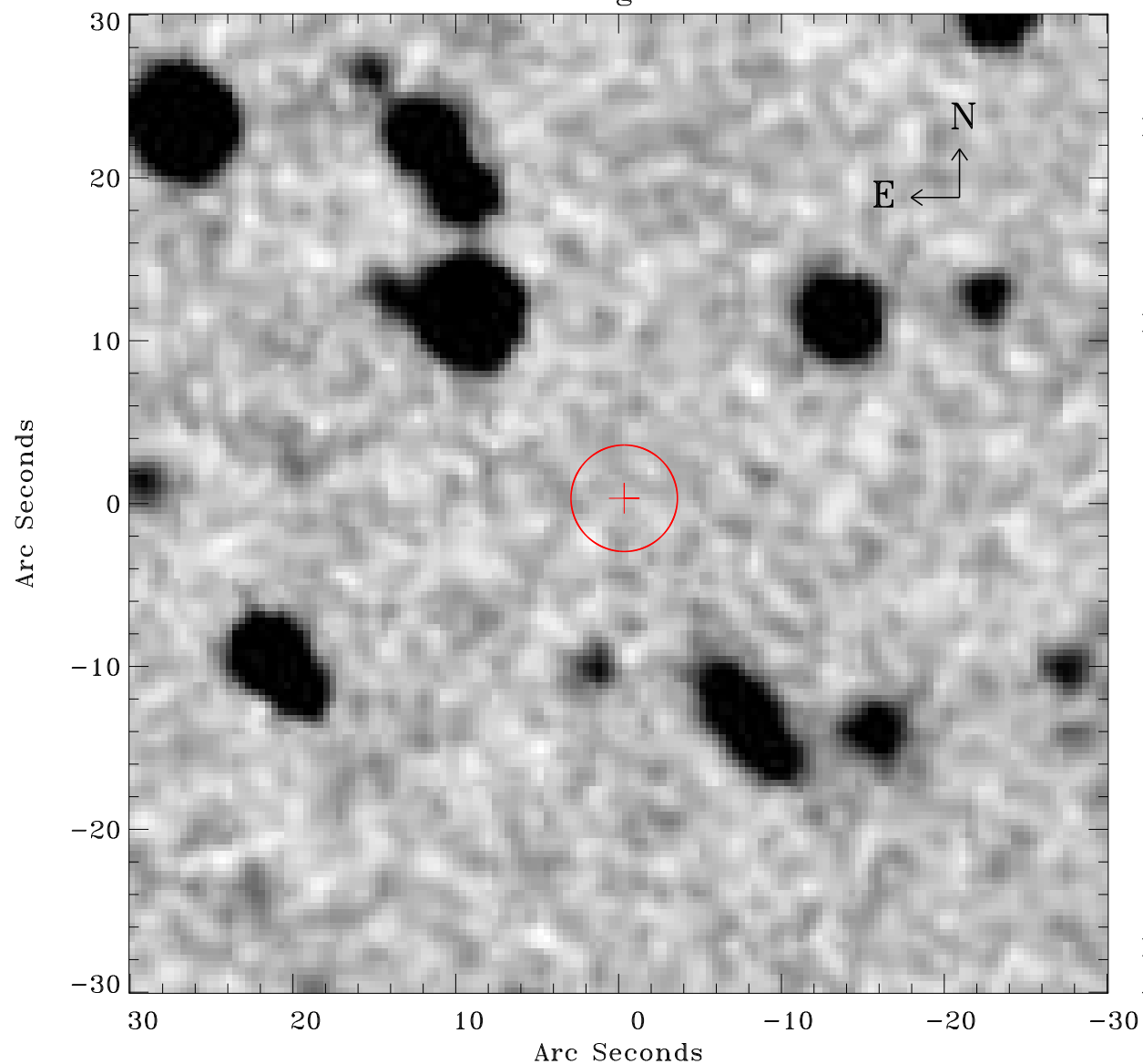


# EPIC source finding chart ACDS V10.0



Principal Investigator :

Dr Michael Koss

XMM target name :

NGC 4785

OBS ID : 762920701

Source number : 63

X-ray coordinates :

$\alpha$  : 12 54 07.77

$\delta$  : -48 33 01.0

Center coordinates :

$\alpha$  : 12 54 07.77

$\delta$  : -48 33 00.9

Plate reference :

Origin : CDS HIPs Network

Plate : MAMA srcj

Pixel : 0.40 "/pix

Error circle :

$R_{90}$  (") : 3.2

XMM SSC

Apr 22 16:27:00 2019