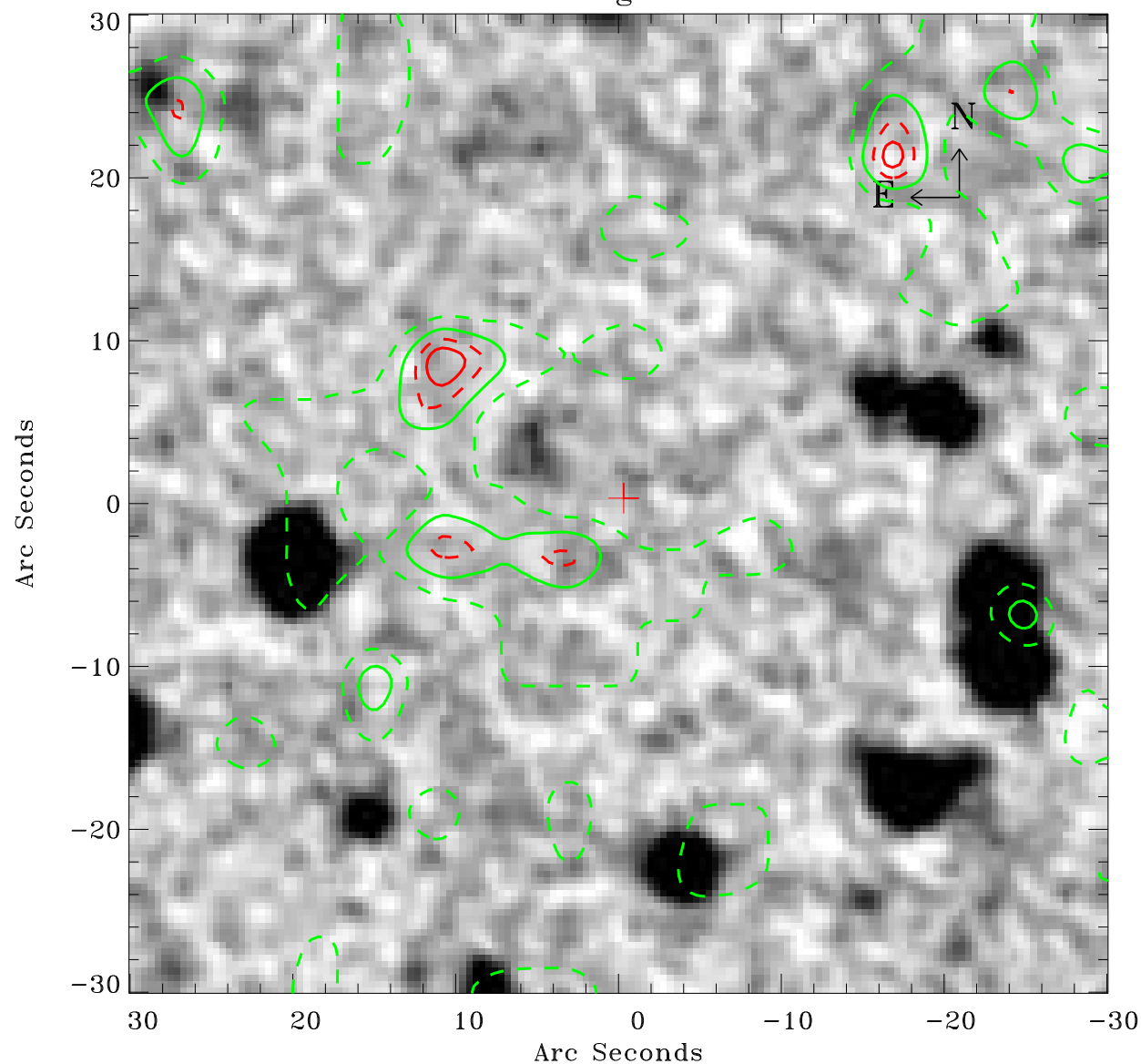


EPIC source finding chart ACDS V10.0



Principal Investigator :

Dr Michael Koss

XMM target name :

NGC 4785

OBS ID : 762920701

Source number : 67

X-ray coordinates :

α : 12 52 38.24

δ : -48 48 52.9

Center coordinates :

α : 12 52 38.23

δ : -48 48 52.8

Plate reference :

Origin : CDS HIPs Network

Plate : MAMA srcj

Pixel : 0.40 "/pix

Contour levels (counts) :

1.38E+00 2.24E+00

2.91E+00 3.43E+00

XMM SSC

Apr 22 16:24:44 2019