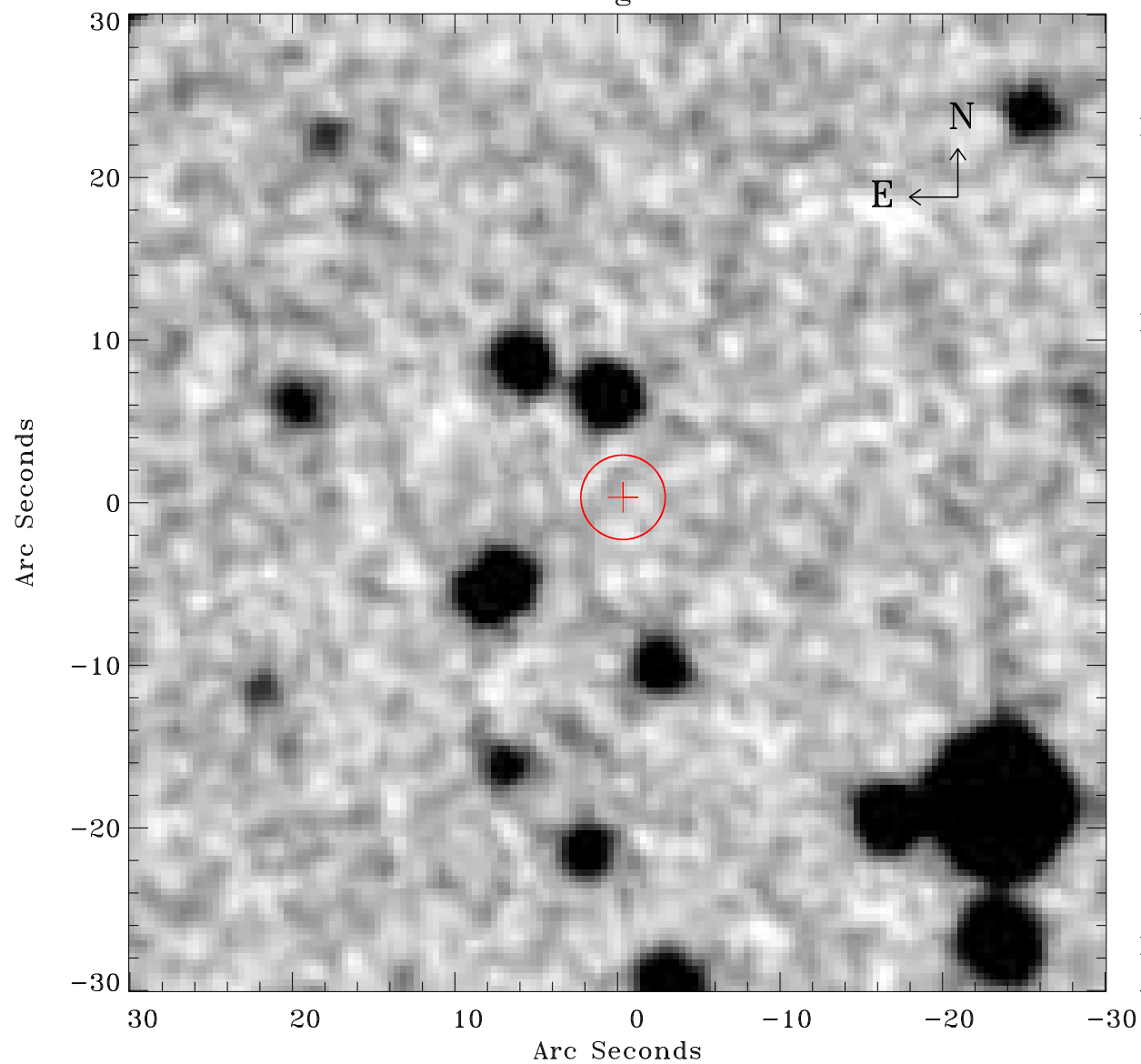


EPIC source finding chart ACDS V10.0



Principal Investigator :

Dr Michael Koss

XMM target name :

NGC 4785

OBS ID : 762920701

Source number : 71

X-ray coordinates :

α : 12 52 46.79

δ : -48 46 33.4

Center coordinates :

α : 12 52 46.78

δ : -48 46 33.3

Plate reference :

Origin : CDS HIPs Network

Plate : MAMA srcj

Pixel : 0.40 "/pix

Error circle :

R_{90} (") : 2.6

XMM SSC

Apr 22 16:24:51 2019