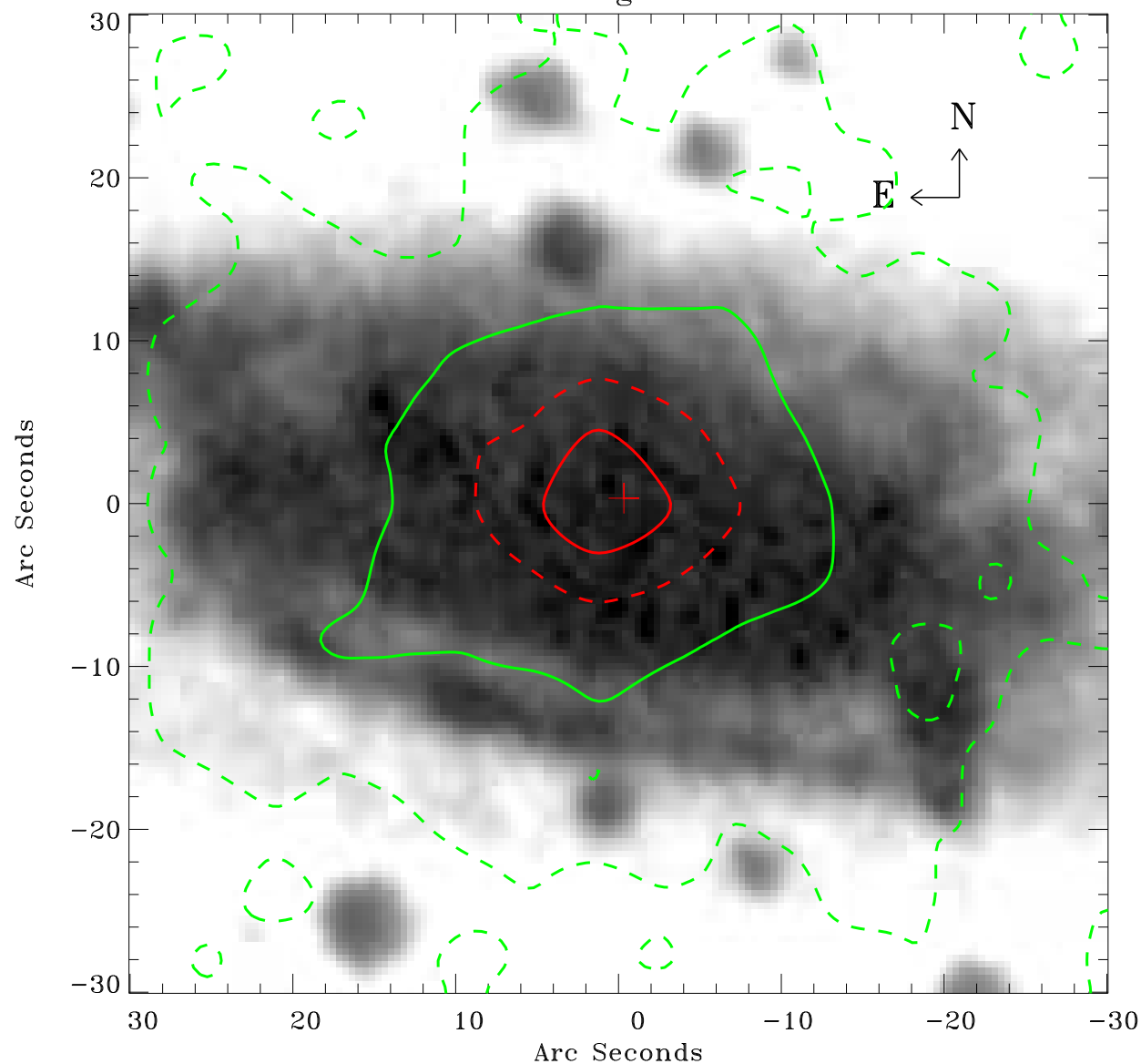


EPIC source finding chart ACDS V10.0



Principal Investigator :

Dr Michael Koss

XMM target name :

NGC 4785

OBS ID : 762920701

Source number : 2

X-ray coordinates :

α : 12 53 27.41

δ : -48 44 56.3

Center coordinates :

α : 12 53 27.41

δ : -48 44 56.2

Plate reference :

Origin : CDS HIPs Network

Plate : MAMA srcj

Pixel : 0.40 "/pix

Contour levels (counts) :

--- 3.47E+00 --- 1.64E+01

--- 5.43E+01 --- 1.17E+02

XMM SSC

Apr 22 16:25:57 2019