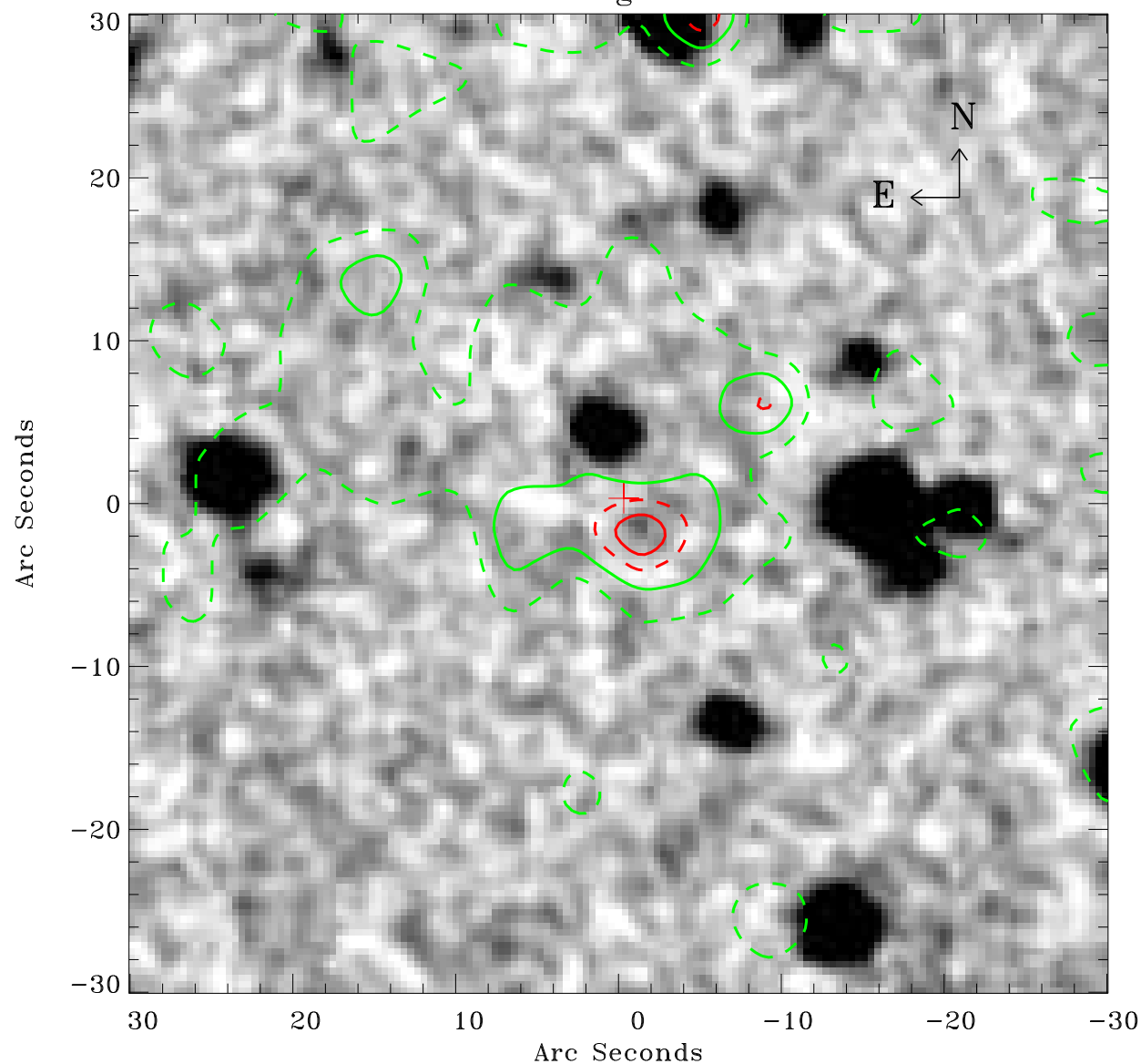


# EPIC source finding chart ACDS V10.0



Principal Investigator :

Dr Michael Koss

XMM target name :

NGC 4785

OBS ID : 762920701

Source number : 31

X-ray coordinates :

$\alpha$  : 12 53 23.23

$\delta$  : -48 50 26.8

Center coordinates :

$\alpha$  : 12 53 23.22

$\delta$  : -48 50 26.7

Plate reference :

Origin : CDS HIPs Network

Plate : MAMA srcj

Pixel : 0.40 "/pix

Contour levels (counts) :

1.69E+00 3.08E+00

4.39E+00 5.50E+00

XMM SSC

Apr 22 16:25:38 2019