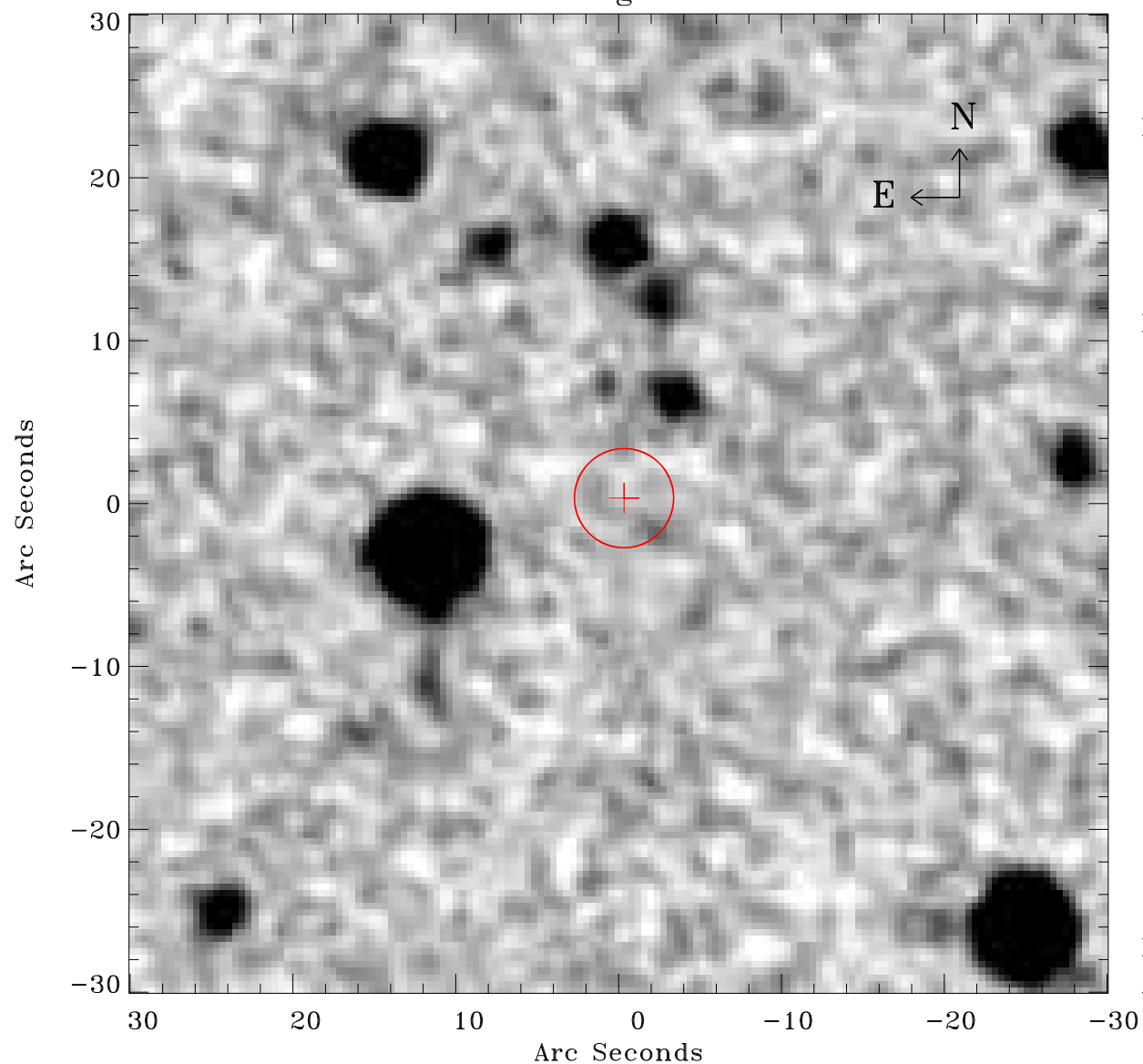


EPIC source finding chart ACDS V10.0



Principal Investigator :

Dr Michael Koss

XMM target name :

NGC 4785

OBS ID : 762920701

Source number : 46

X-ray coordinates :

α : 12 53 48.32

δ : -48 47 24.5

Center coordinates :

α : 12 53 48.31

δ : -48 47 24.4

Plate reference :

Origin : CDS HIPs Network

Plate : MAMA srcj

Pixel : 0.40 "/pix

Error circle :

R_{90} (") : 3.0

XMM SSC

Apr 22 16:26:27 2019