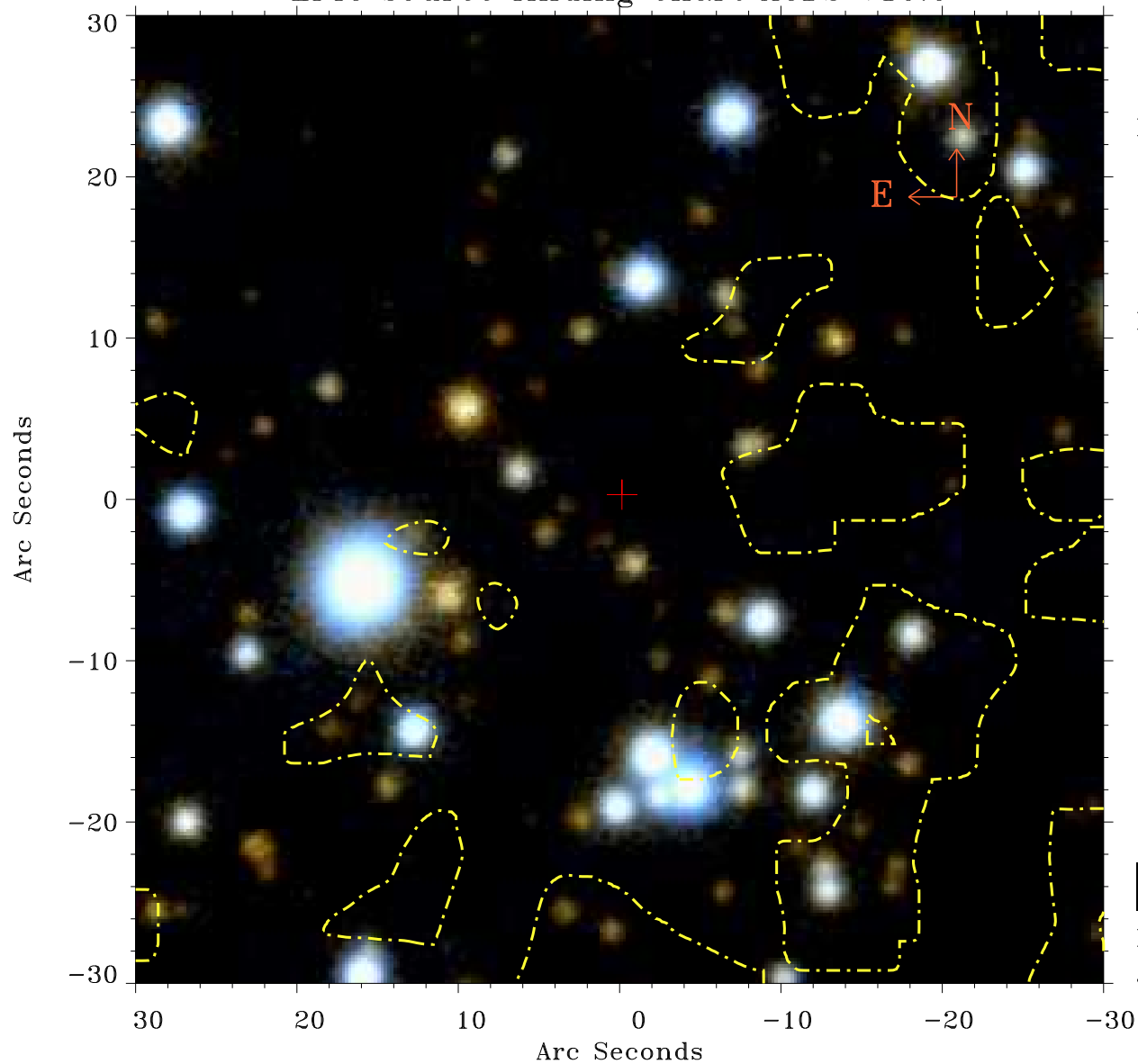


# EPIC source finding chart ACDS V10.0



Principal Investigator :

Dr Fabio Pintore

XMM target name :

XTE J1810-197

OBS ID : 804590201

Source number : 14

X-ray coordinates :

$\alpha$  : 18 09 46.89

$\delta$  : -19 44 24.4

Center coordinates :

$\alpha$  : 18 09 46.89

$\delta$  : -19 44 24.5

Plate reference :

Origin : PanSTARRS-DR1

Color coding :

z band ●

(z+g)/2 ●

g band ●

Contour levels (counts) :



XMM SSC

Jul 18 02:45:04 2019