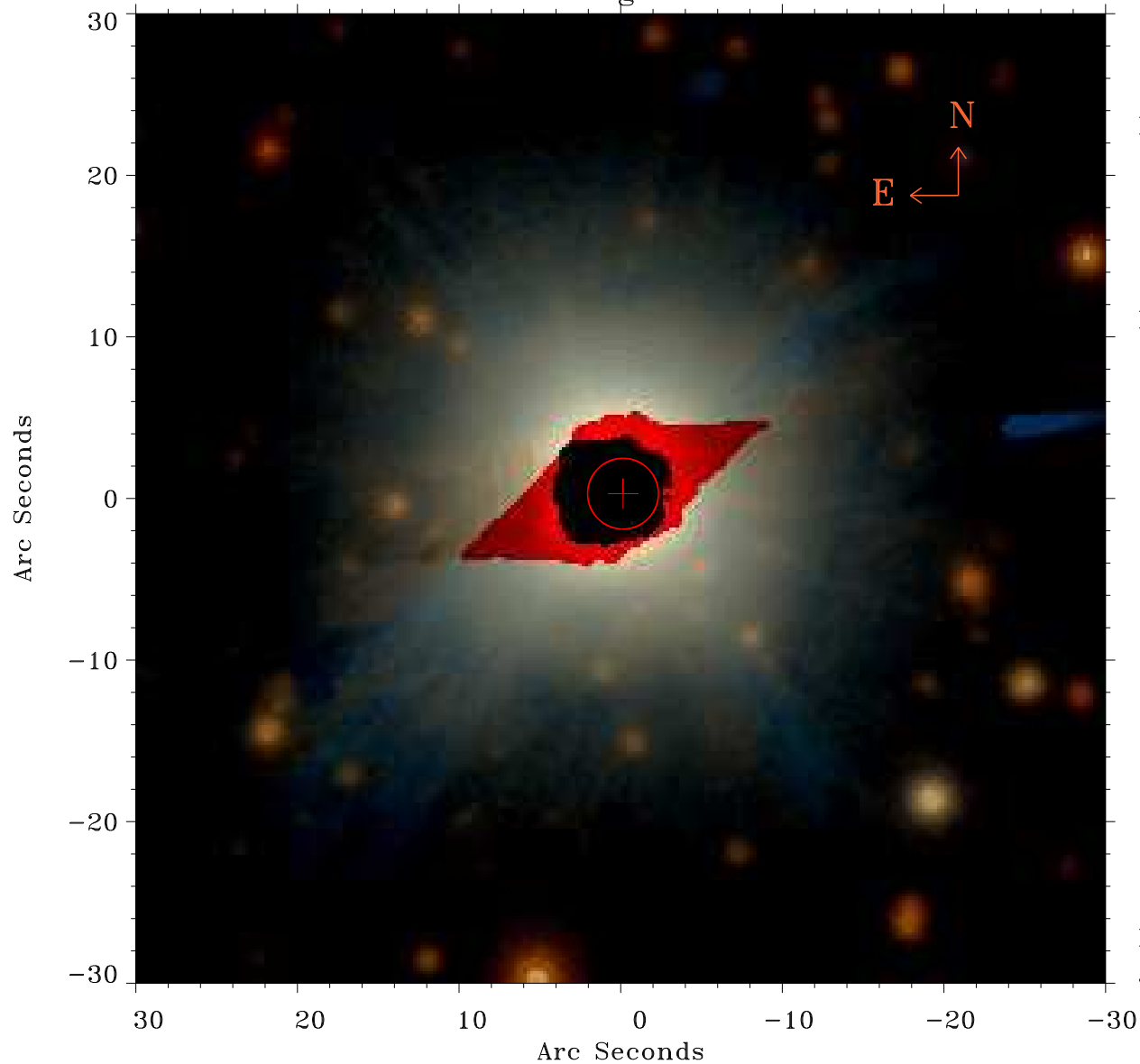


# EPIC source finding chart ACDS V10.0



Principal Investigator :

Dr Fabio Pintore

XMM target name :

XTE J1810-197

OBS ID : 804590401

Source number : 8

X-ray coordinates :

$\alpha$  : 18 09 04.62

$\delta$  : -19 52 31.4

Center coordinates :

$\alpha$  : 18 09 04.62

$\delta$  : -19 52 31.5

Plate reference :

Origin : PanSTARRS-DR1

Color coding :

z band ●

(z+g)/2 ●

g band ●

Error:

R90 : 2.2 arsec

XMM SSC

Jul 18 02:48:20 2019