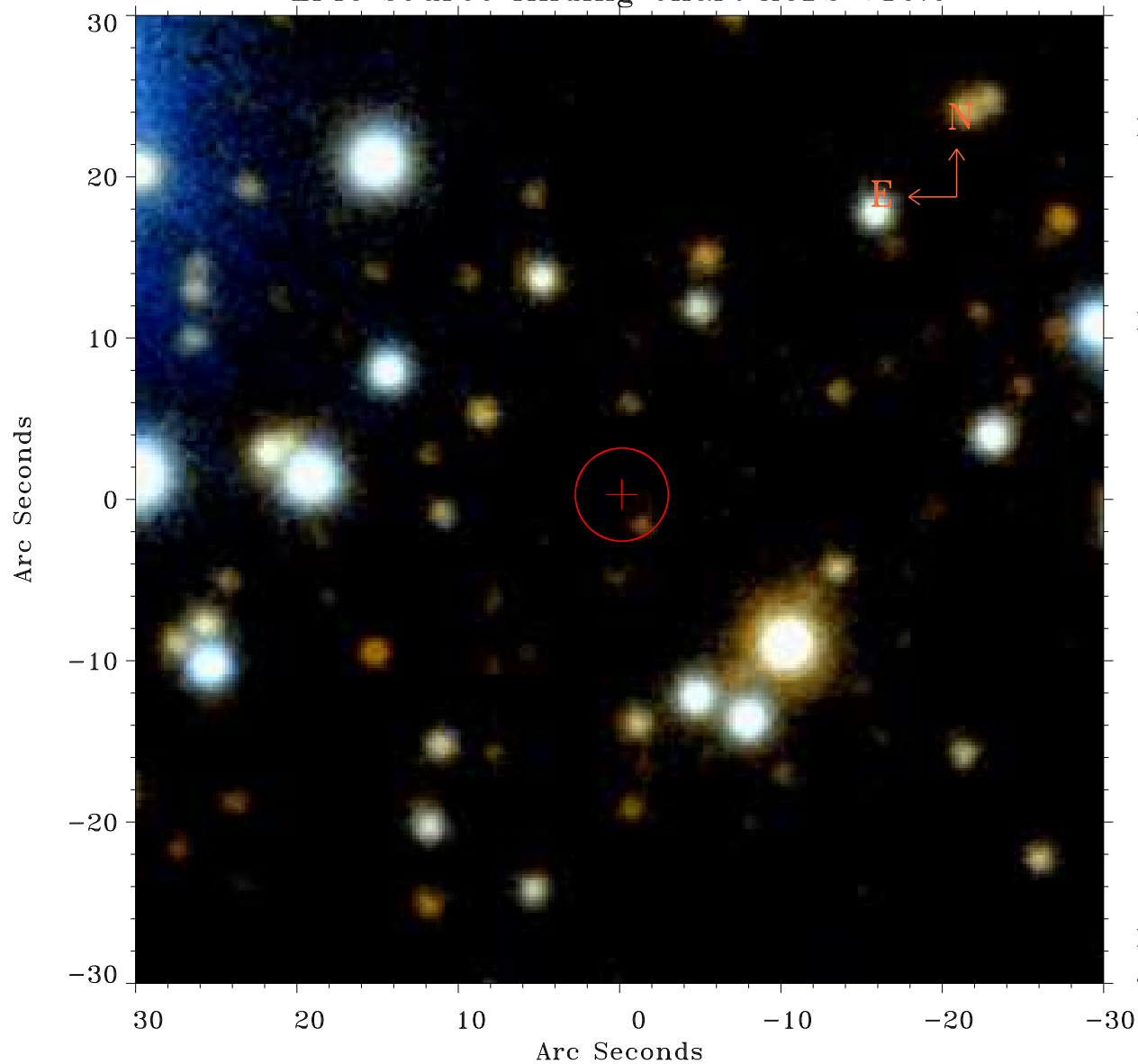


# EPIC source finding chart ACDS V10.0



Principal Investigator :

Dr Fabio Pintore

XMM target name :

XTE J1810-197

OBS ID : 804590401

Source number : 24

X-ray coordinates :

$\alpha$  : 18 09 45.21

$\delta$  : -19 38 08.3

Center coordinates :

$\alpha$  : 18 09 45.20

$\delta$  : -19 38 08.3

Plate reference :

Origin : PanSTARRS-DR1

Color coding :

z band ●

(z+g)/2 ●

g band ●

Error:

R90 : 2.9 arsec

XMM SSC

Jul 18 02:54:42 2019