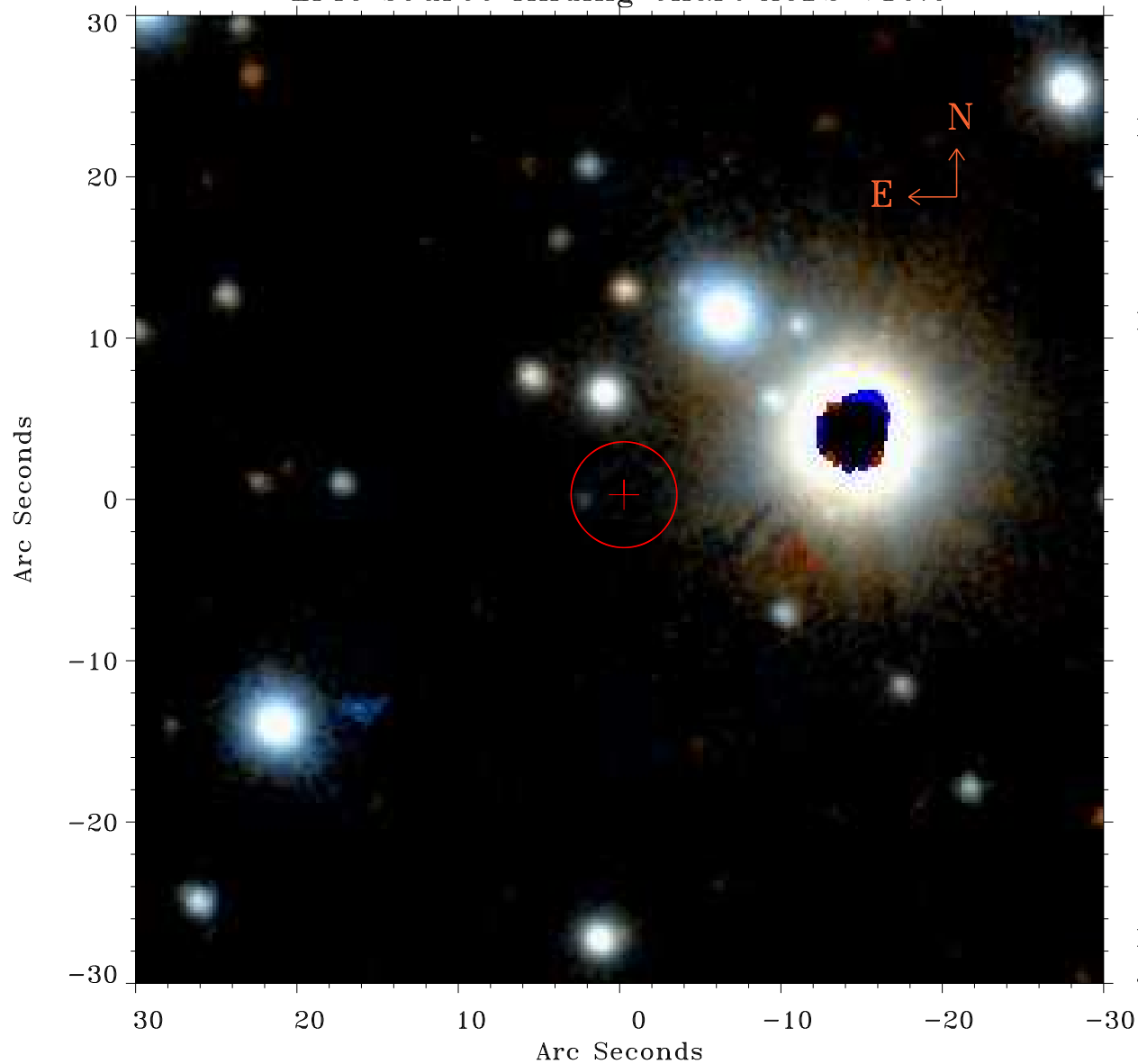


# EPIC source finding chart ACDS V10.0



Principal Investigator :

Dr Fabio Favata

XMM target name :

61 Cyg

OBS ID : 823500701

Source number : 28

X-ray coordinates :

$\alpha$  : 21 06 18.10

$\delta$  : +38 49 24.6

Center coordinates :

$\alpha$  : 21 06 18.10

$\delta$  : +38 49 24.5

Plate reference :

Origin : PanSTARRS-DR1

Color coding :

z band ●

(z+g)/2 ●

g band ●

Error:

R90 : 3.3 arcsec

XMM SSC

Jul 17 19:32:06 2019