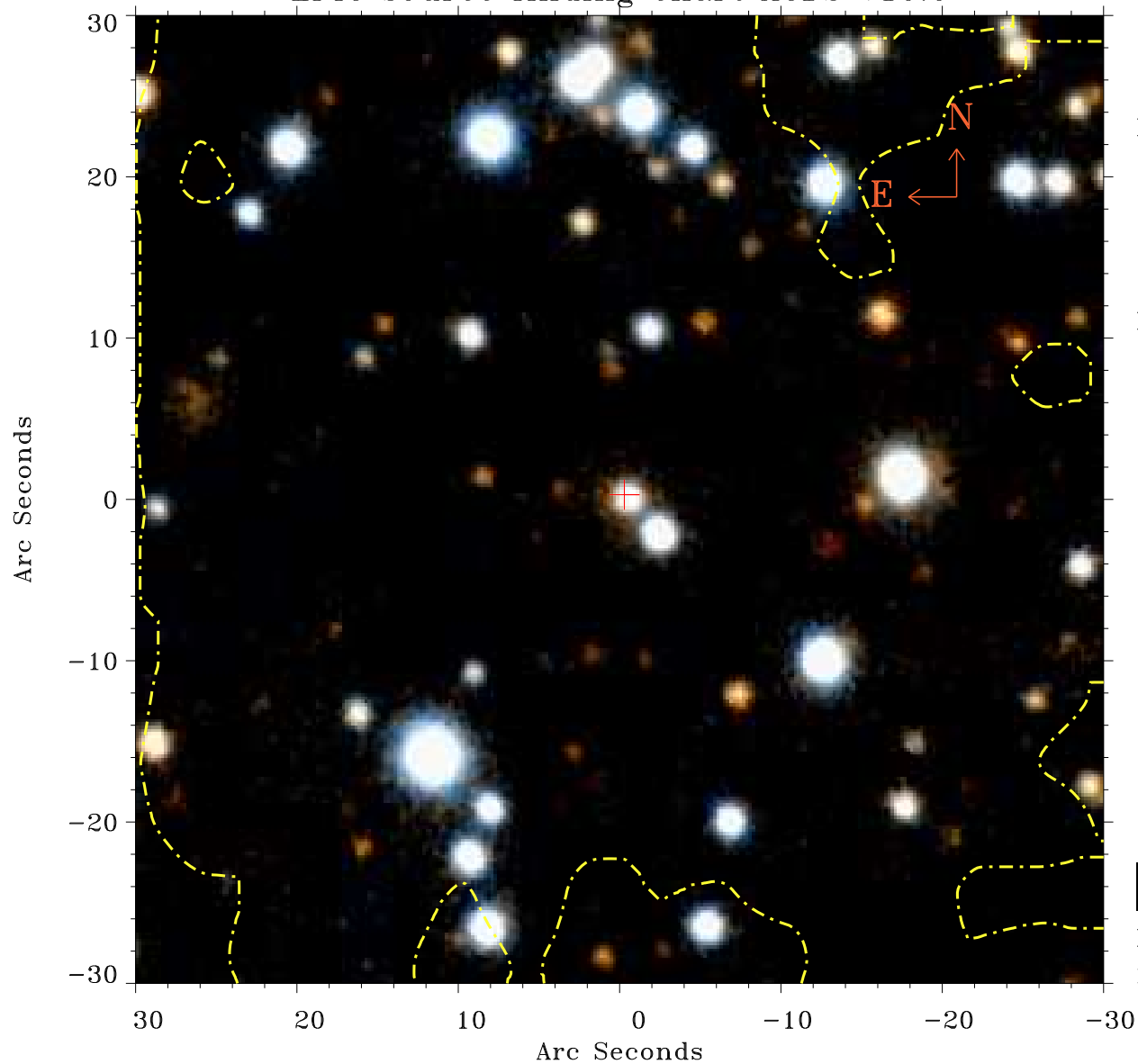


# EPIC source finding chart ACDS V10.0



Principal Investigator :

Dr Jari Kajava

XMM target name :

V594 Cyg

OBS ID : 861171701

Source number : 7

X-ray coordinates :

$\alpha$  : 21 20 40.66

$\delta$  : +43 17 59.2

Center coordinates :

$\alpha$  : 21 20 40.67

$\delta$  : +43 17 59.1

Plate reference :

Origin : PanSTARRS-DR1

Color coding :

z band ●

(z+g)/2 ●

g band ●

Contour levels (counts) :



XMM SSC

May 13 18:34:43 2021