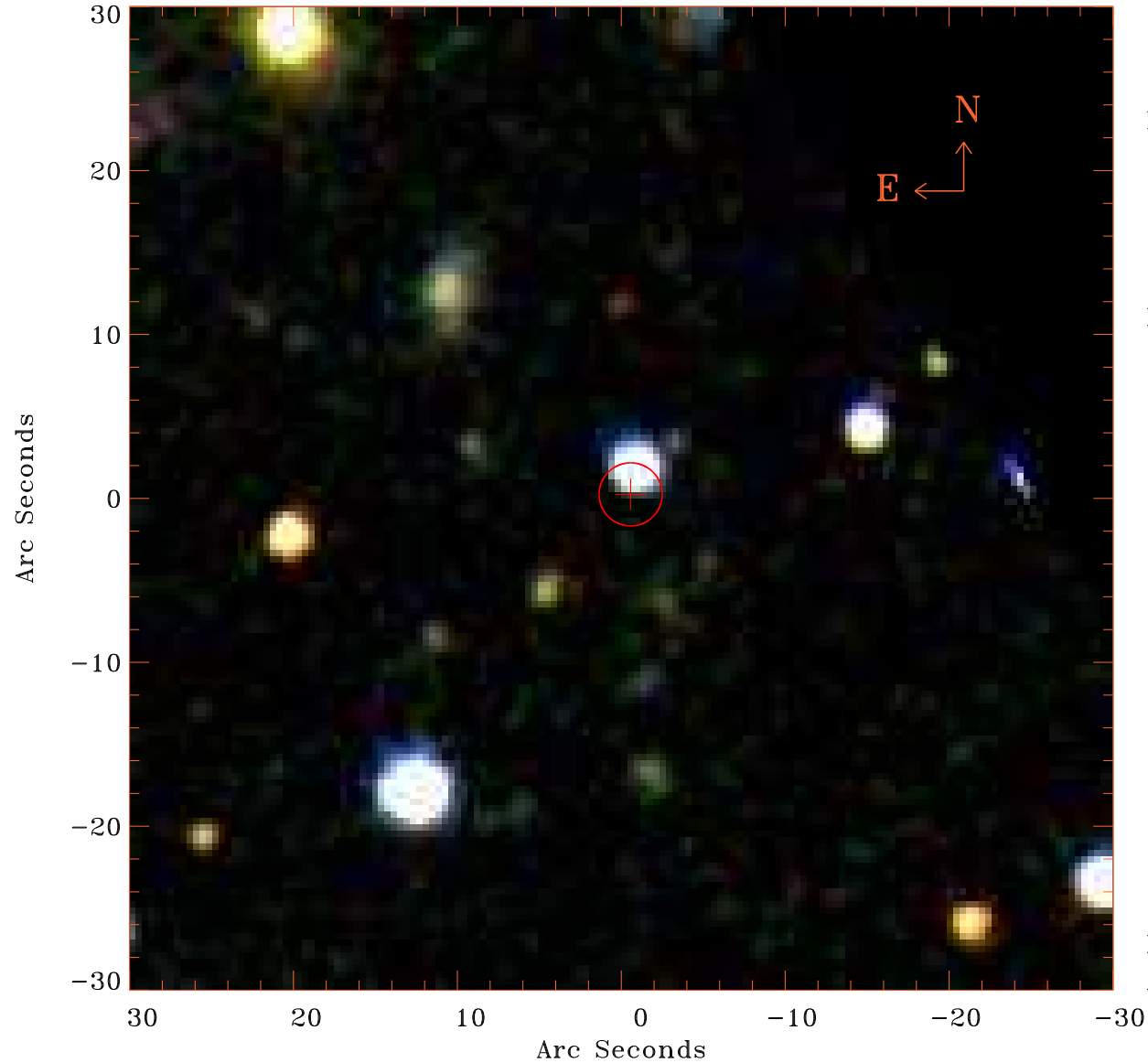


# EPIC source finding chart V10.0



Principal Investigator :

Prof Stephen Walker

XMM target name :

Perseus°cf50°S

OBS ID : 862510201

Source number : 9

X-ray coordinates :

$\alpha$  : 03 16 07.40

$\delta$  : +41 05 40.4

Center coordinates :

$\alpha$  : 03 16 07.42

$\delta$  : +41 05 40.5

Plate reference :

Origin : SDSS

Color coding :

i band ●

r band ●

g band ●

Error circle :

$R_{90}$  (") : 1.9

XMM SSC

Aug 28 15:01:41 2020