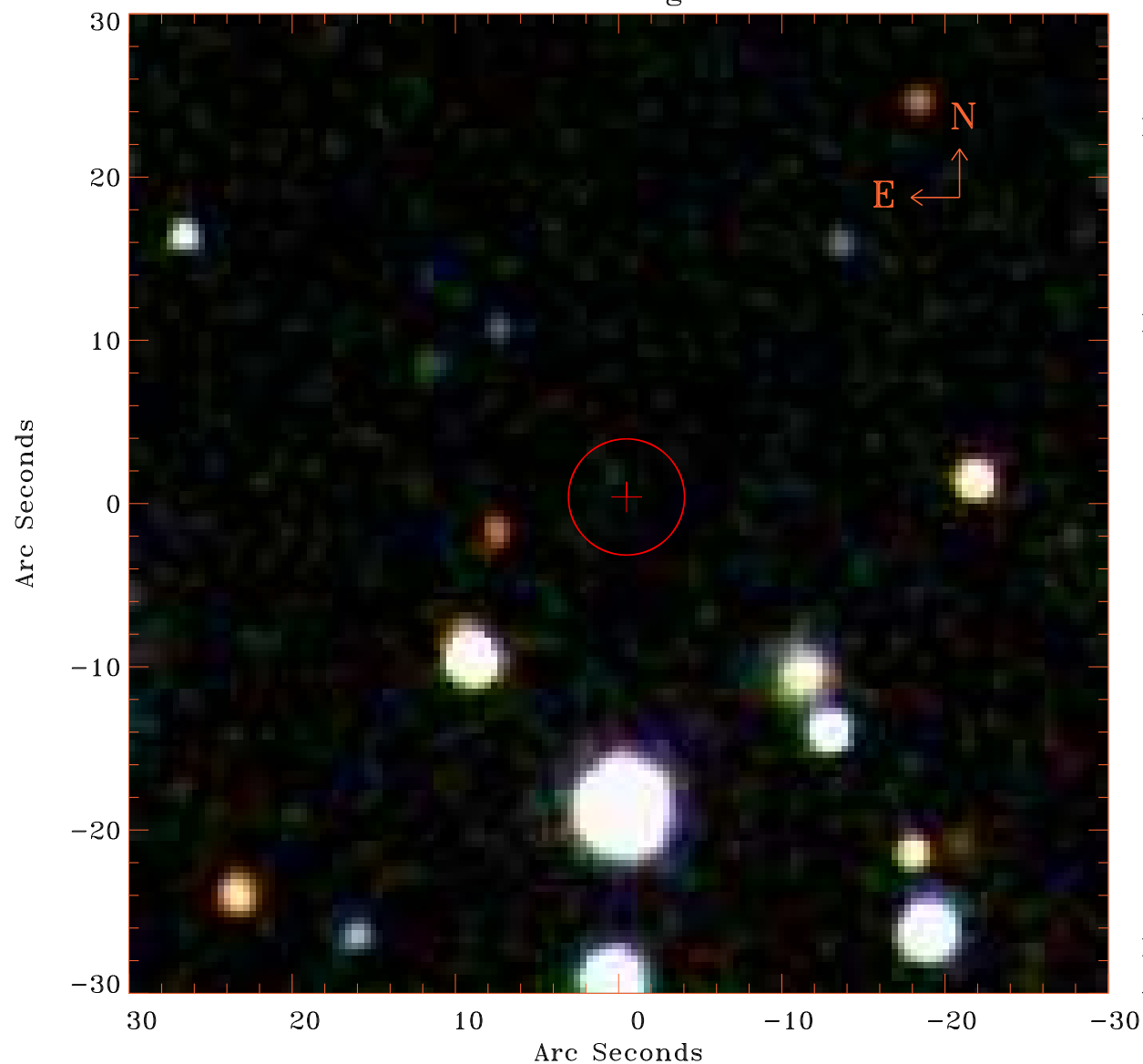


EPIC source finding chart V10.0



Principal Investigator :

Prof Stephen Walker

XMM target name :

Perseus°cf50°S

OBS ID : 862510201

Source number : 38

X-ray coordinates :

α : 03 15 07.65

δ : +40 57 11.4

Center coordinates :

α : 03 15 07.66

δ : +40 57 11.4

Plate reference :

Origin : SDSS

Color coding :

i band ●

r band ●

g band ●

Error circle :

R_{90} (") : 3.5

XMM SSC

Aug 28 15:01:38 2020