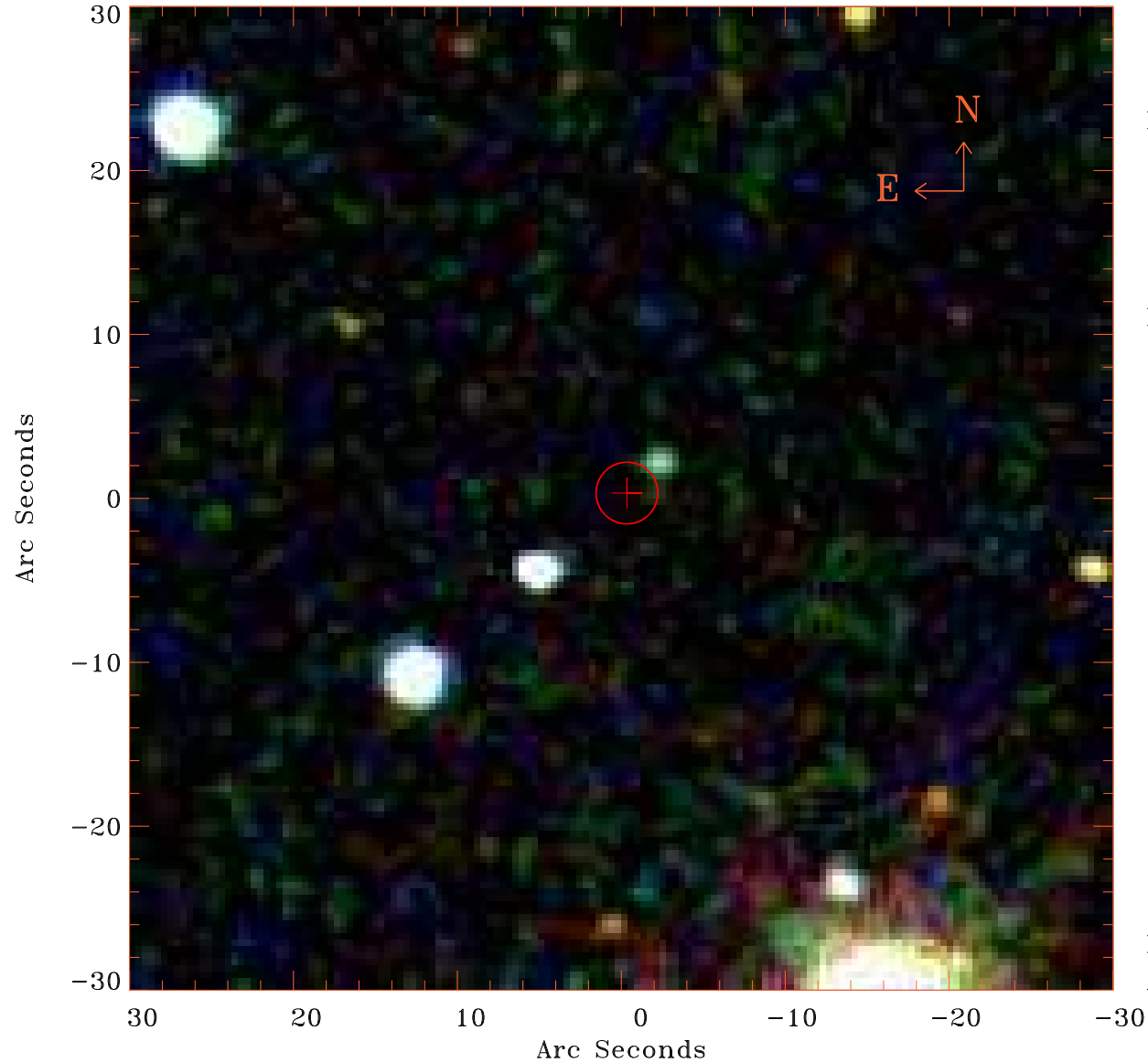


# EPIC source finding chart V10.0



Principal Investigator :  
Prof Stephen Walker

XMM target name :  
Perseus°cf75°N

OBS ID : 862510301  
Source number : 15

X-ray coordinates :  
 $\alpha$  : 03 14 05.78  
 $\delta$  : +42 22 20.0

Center coordinates :  
 $\alpha$  : 03 14 05.77  
 $\delta$  : +42 22 20.0

Plate reference :  
Origin : SDSS

Color coding :  
i band ●  
r band ●  
g band ●

Error circle :  
 $R_{90}$  (") : 1.9

XMM SSC  
Aug 25 14:31:51 2020