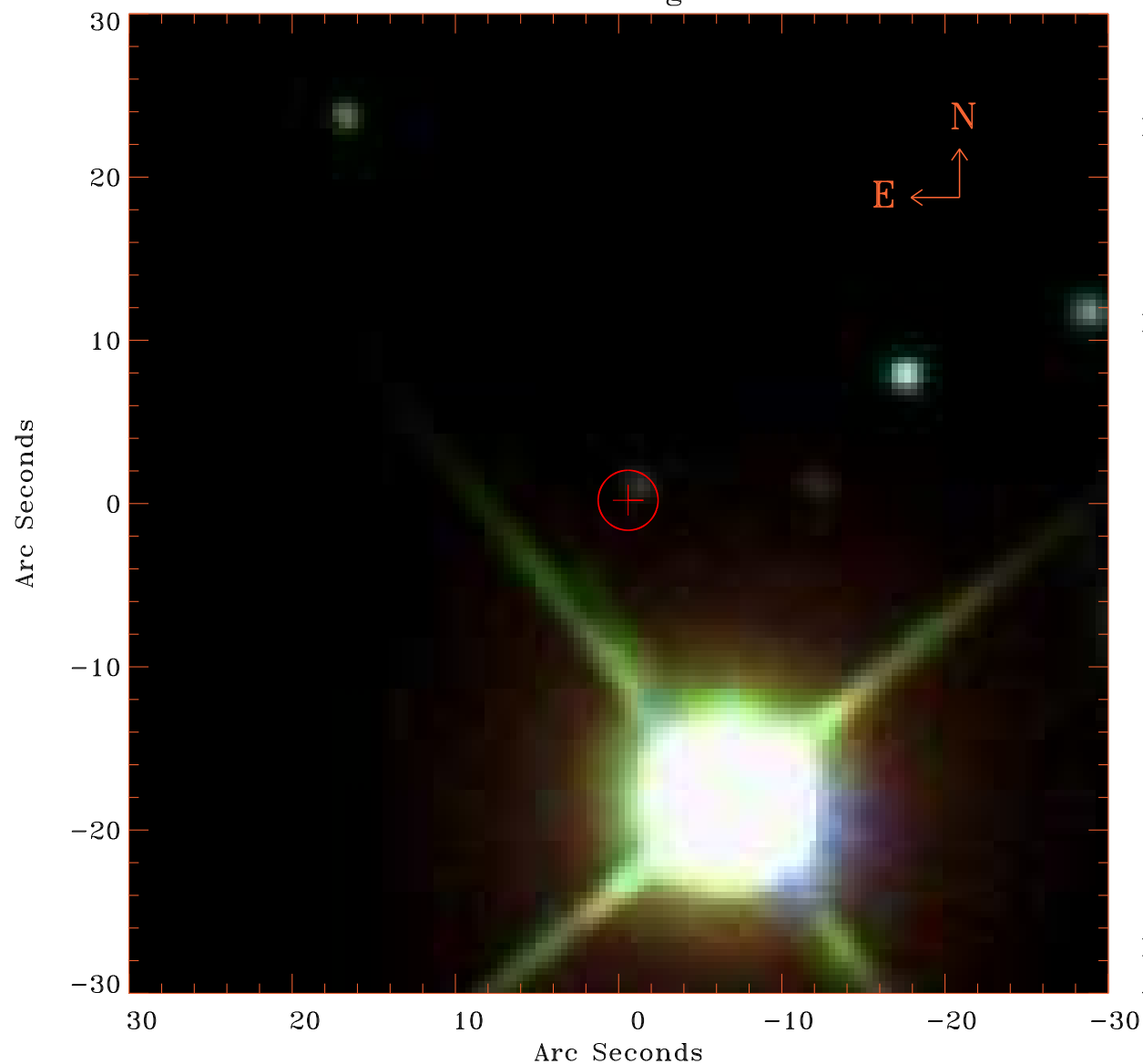


EPIC source finding chart V10.0



Principal Investigator :

Prof Stephen Walker

XMM target name :

Perseus°cf75°N

OBS ID : 862510301

Source number : 12

X-ray coordinates :

α : 03 15 44.18

δ : +42 16 26.7

Center coordinates :

α : 03 15 44.20

δ : +42 16 26.9

Plate reference :

Origin : SDSS

Color coding :

i band ●

r band ●

g band ●

Error circle :

R_{90} (") : 1.8

XMM SSC

Aug 25 14:31:59 2020