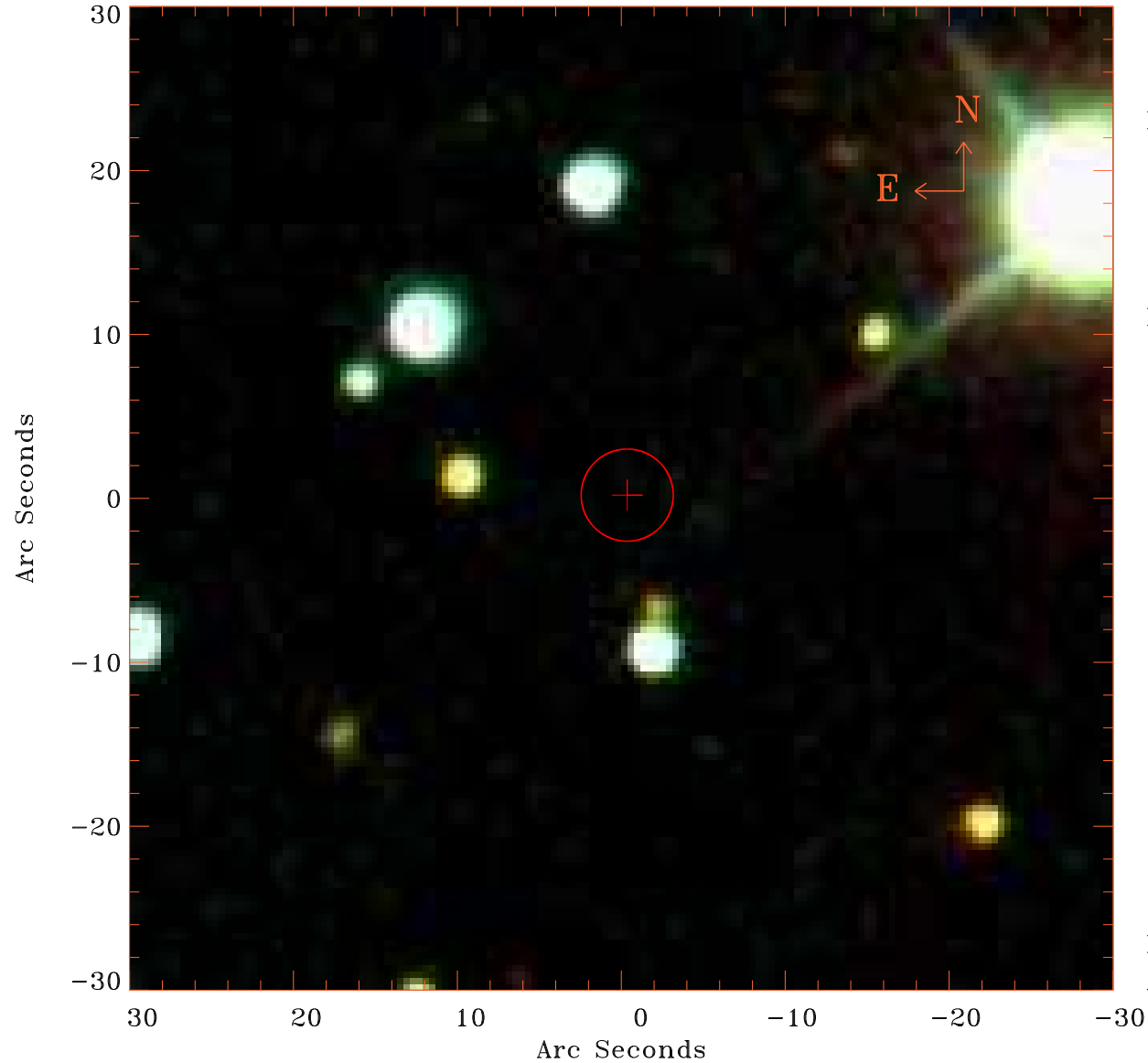


# EPIC source finding chart V10.0



Principal Investigator :

Prof Stephen Walker

XMM target name :

Perseus°cf75°N

OBS ID : 862510301

Source number : 32

X-ray coordinates :

$\alpha$  : 03 15 04.92

$\delta$  : +42 15 44.8

Center coordinates :

$\alpha$  : 03 15 04.92

$\delta$  : +42 15 45.0

Plate reference :

Origin : SDSS

Color coding :

i band ●

r band ●

g band ●

Error circle :

$R_{90}$  (") : 2.8

XMM SSC

Aug 25 14:31:56 2020