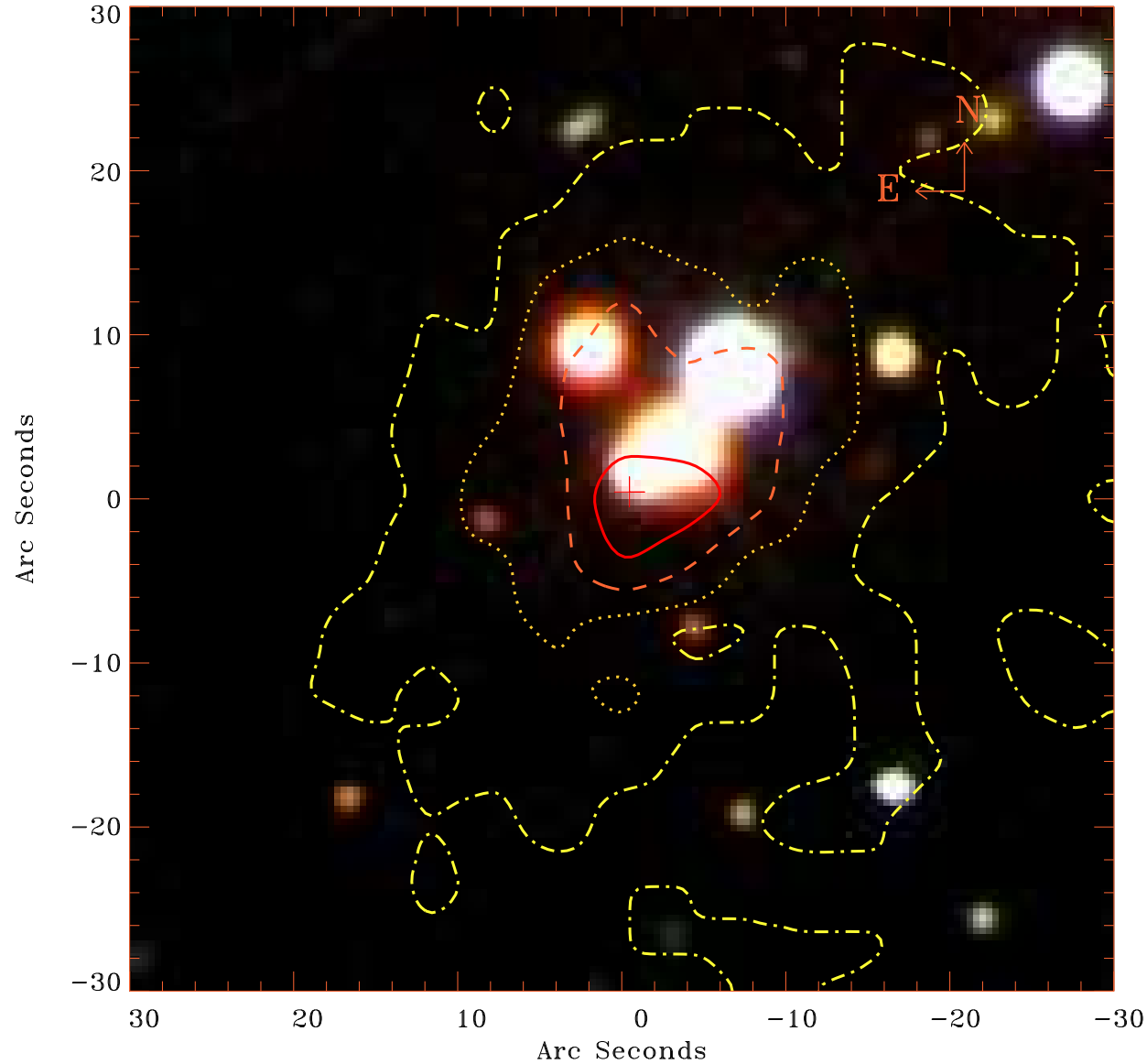


# EPIC source finding chart V10.0



Principal Investigator :

Prof Stephen Walker

XMM target name :

Perseus°cf75°S

OBS ID : 862510401

Source number : 2

X-ray coordinates :

$\alpha$  : 03 14 22.41

$\delta$  : +41 05 08.7

Center coordinates :

$\alpha$  : 03 14 22.42

$\delta$  : +41 05 08.7

Plate reference :

Origin : SDSS

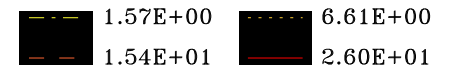
Color coding :

i band ●

r band ●

g band ●

Contour levels (counts) :



XMM SSC

Aug 28 15:29:56 2020