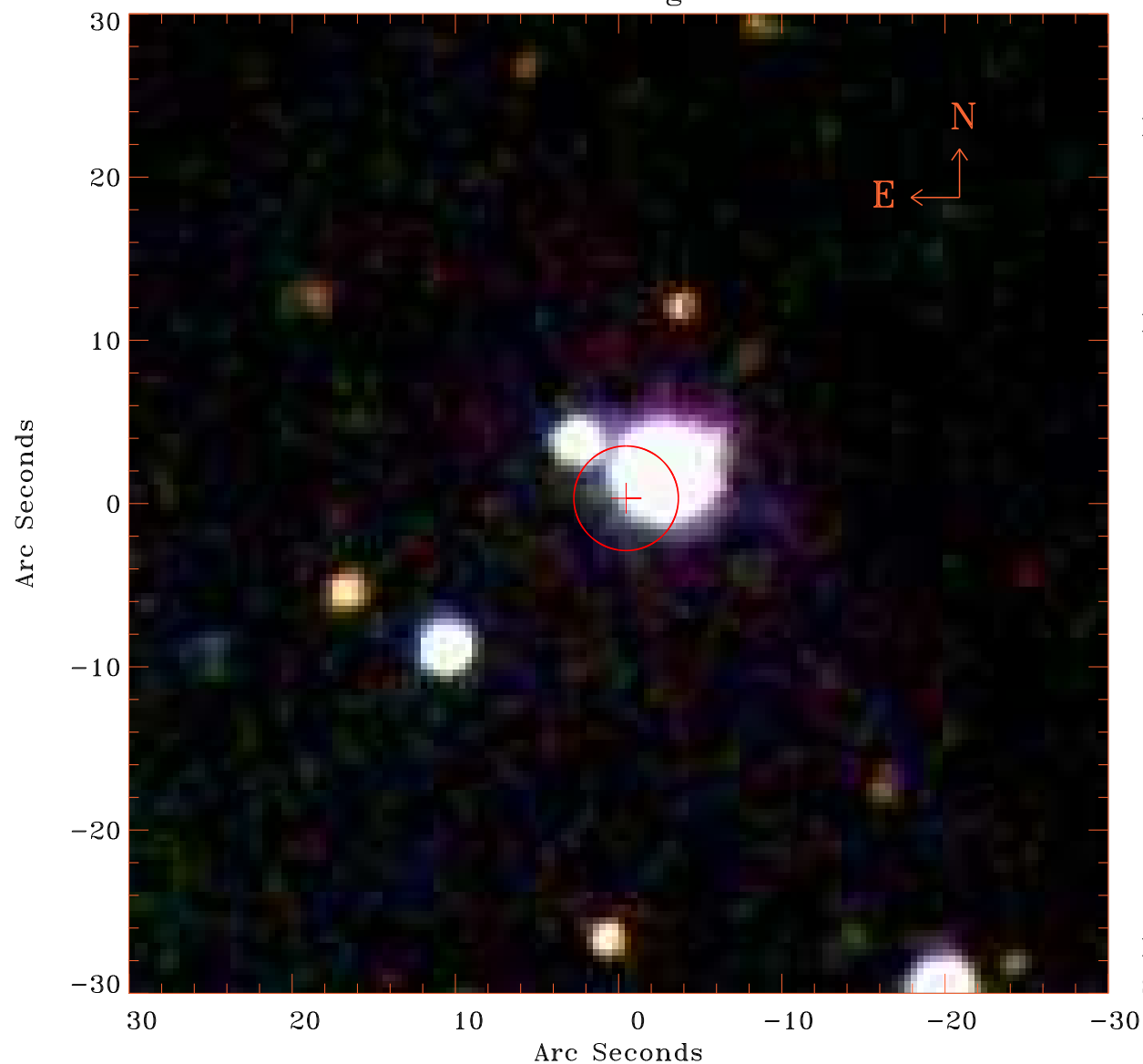


EPIC source finding chart V10.0



Principal Investigator :
Prof Stephen Walker

XMM target name :
Perseus°cf50°N

OBS ID : 862510501
Source number : 9

X-ray coordinates :
 α : 03 16 24.17
 δ : +42 19 51.4

Center coordinates :
 α : 03 16 24.18
 δ : +42 19 51.5

Plate reference :
Origin : SDSS

Color coding :
i band ●
r band ●
g band ●

Error circle :
 R_{90} (") : 3.2

XMM SSC
Sep 25 14:27:29 2020