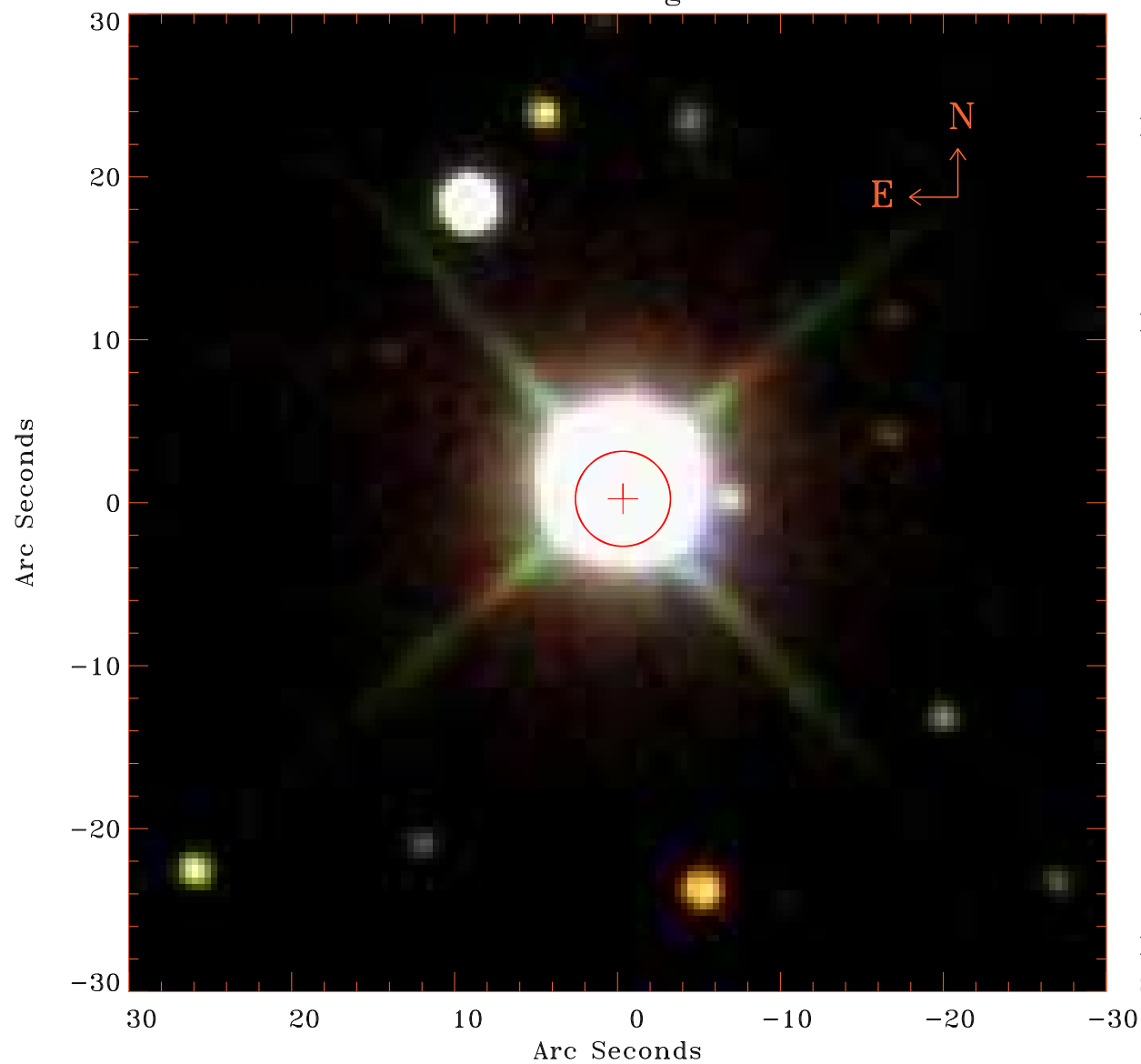


EPIC source finding chart V10.0



Principal Investigator :

Prof Stephen Walker

XMM target name :

Perseus°cf50°N

OBS ID : 862510501

Source number : 12

X-ray coordinates :

α : 03 17 00.68

δ : +42 16 13.7

Center coordinates :

α : 03 17 00.67

δ : +42 16 13.9

Plate reference :

Origin : SDSS

Color coding :

i band ●

r band ●

g band ●

Error circle :

R_{90} (") : 2.9

XMM SSC

Sep 25 14:27:30 2020