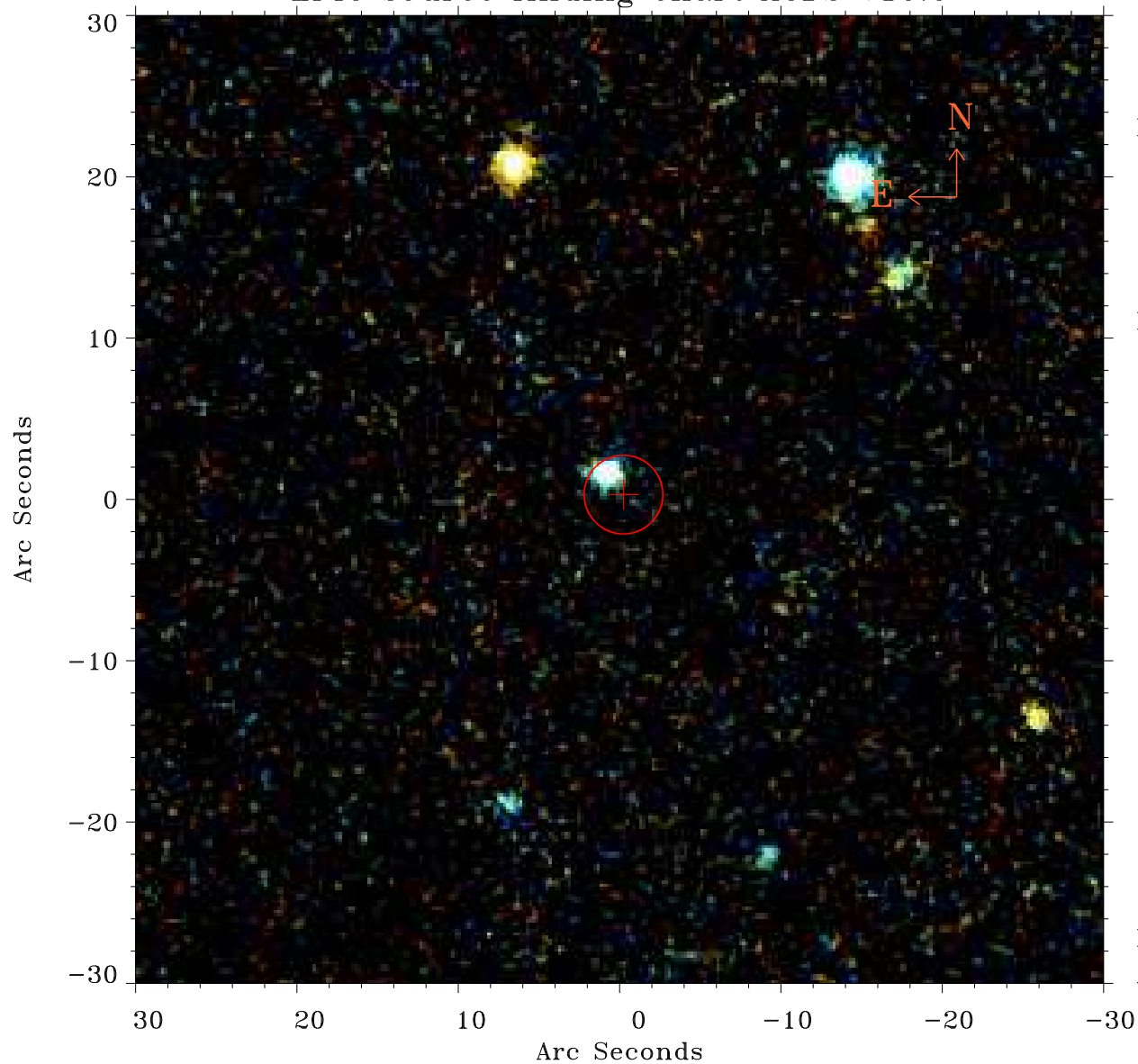


# EPIC source finding chart ACDS V10.0



Principal Investigator :

Prof Thomas Reiprich

XMM target name :

RXCJ2101.5-1317

OBS ID : 864052501

Source number : 24

X-ray coordinates :

$\alpha$  : 21 02 08.77

$\delta$  : -13 21 27.7

Center coordinates :

$\alpha$  : 21 02 08.78

$\delta$  : -13 21 27.8

Plate reference :

Origin : PanSTARRS-DR1

Color coding :

z band ●

(z+g)/2 ●

g band ●

Error:

R90 : 2.4 arcsec

XMM SSC

Apr 29 19:29:09 2021