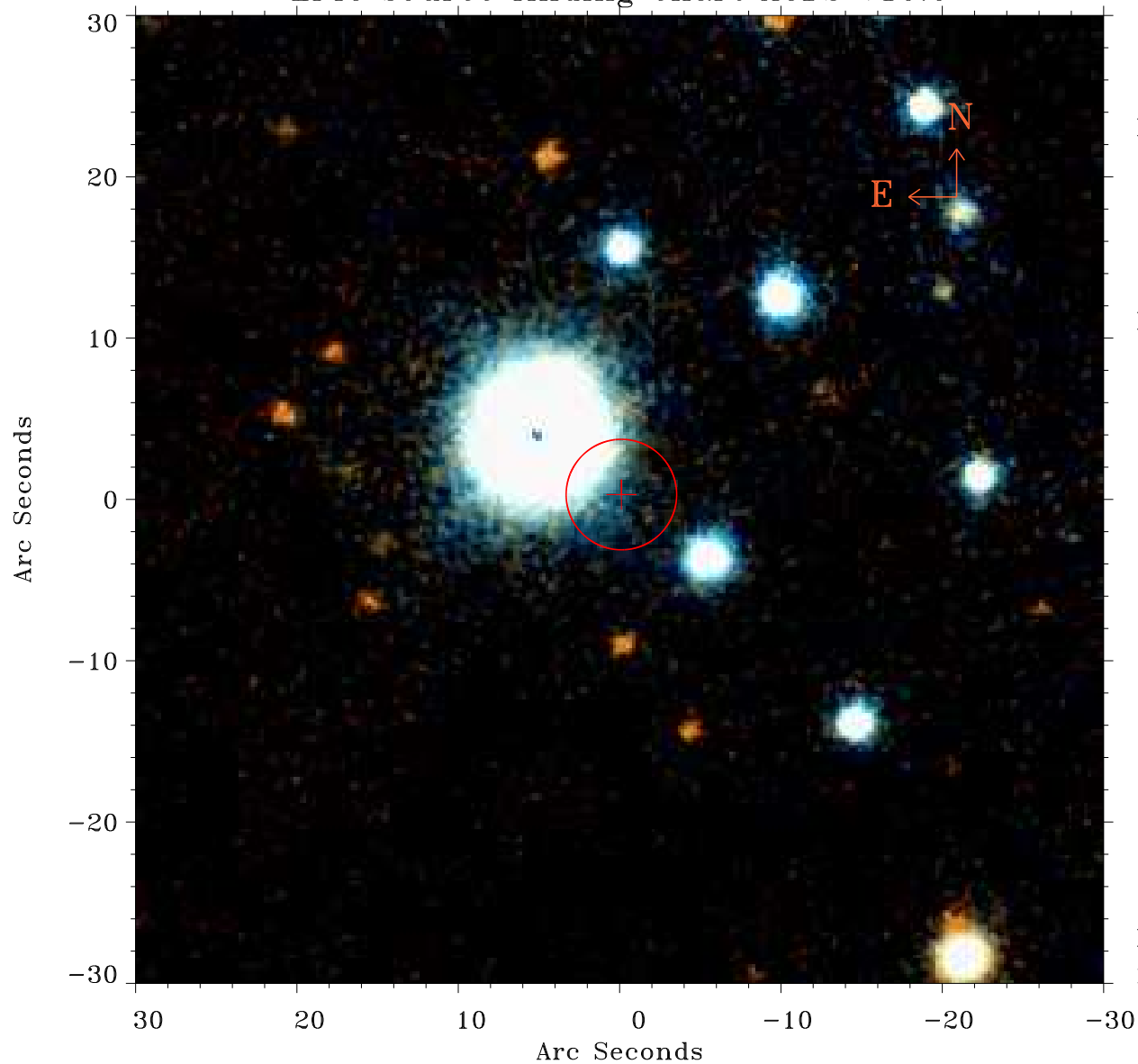


# EPIC source finding chart ACDS V10.0



Principal Investigator :  
Dr NORBERT SCHARTEL (PS)

XMM target name :  
ESO 490-G026

OBS ID : 891802601  
Source number : 11

X-ray coordinates :  
 $\alpha$  : 06 39 51.99  
 $\delta$  : -25 42 17.8

Center coordinates :  
 $\alpha$  : 06 39 51.99  
 $\delta$  : -25 42 17.9

Plate reference :  
Origin : PanSTARRS-DR1

Color coding :  
z band ●  
(z+g)/2 ●  
g band ●

Error:  
R90 : 3.4 arsec

XMM SSC  
Nov 29 13:14:38 2021