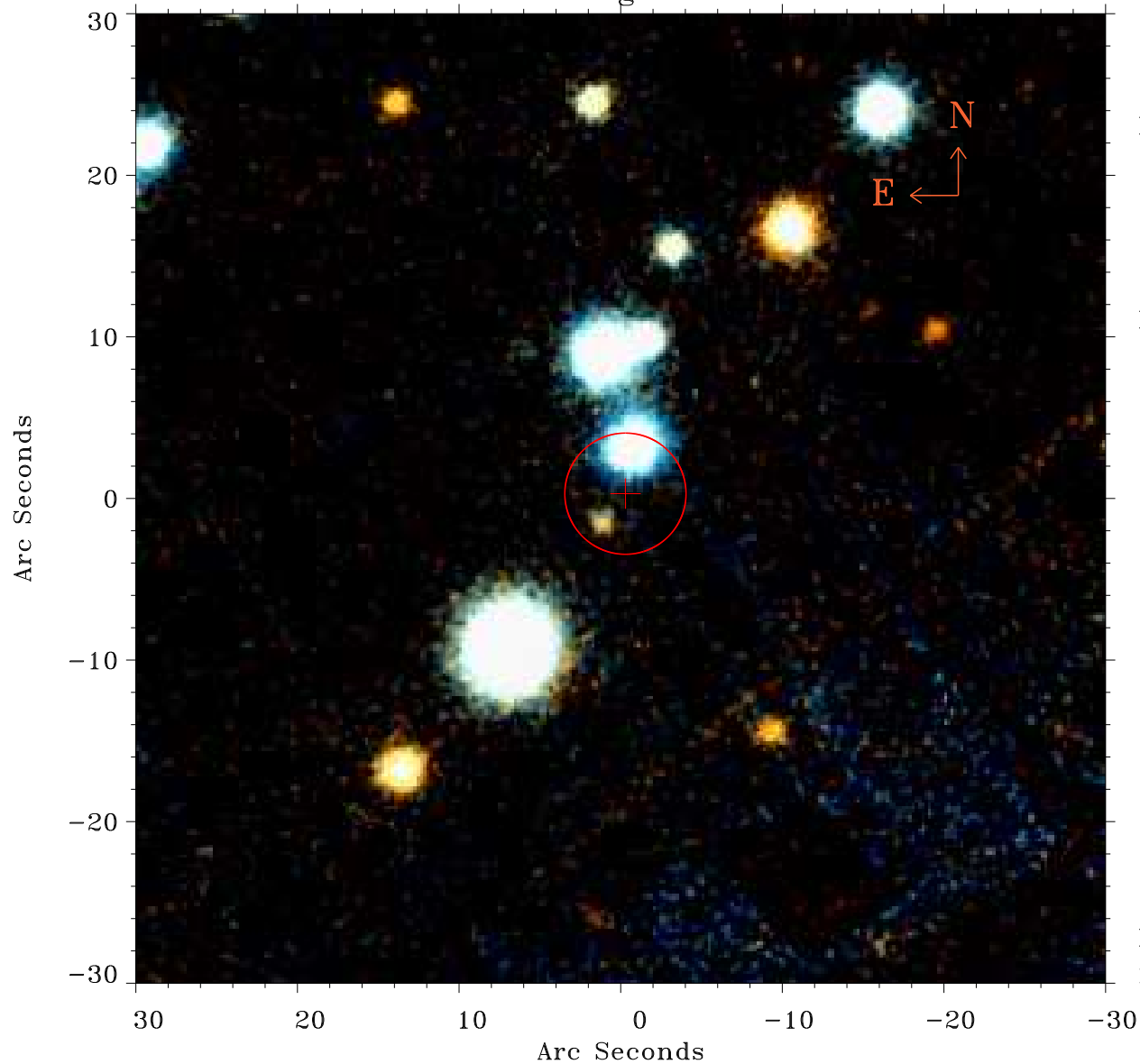


EPIC source finding chart ACDS V10.0



Principal Investigator :
Dr NORBERT SCHARTEL (PS)

XMM target name :
ESO 490-G026

OBS ID : 891802601
Source number : 9

X-ray coordinates :
 α : 06 40 34.43
 δ : -25 46 30.9

Center coordinates :
 α : 06 40 34.44
 δ : -25 46 31.0

Plate reference :
Origin : PanSTARRS-DR1

Color coding :
z band ●
(z+g)/2 ●
g band ●

Error:
R90 : 3.7 arsec

XMM SSC
Nov 29 13:15:03 2021