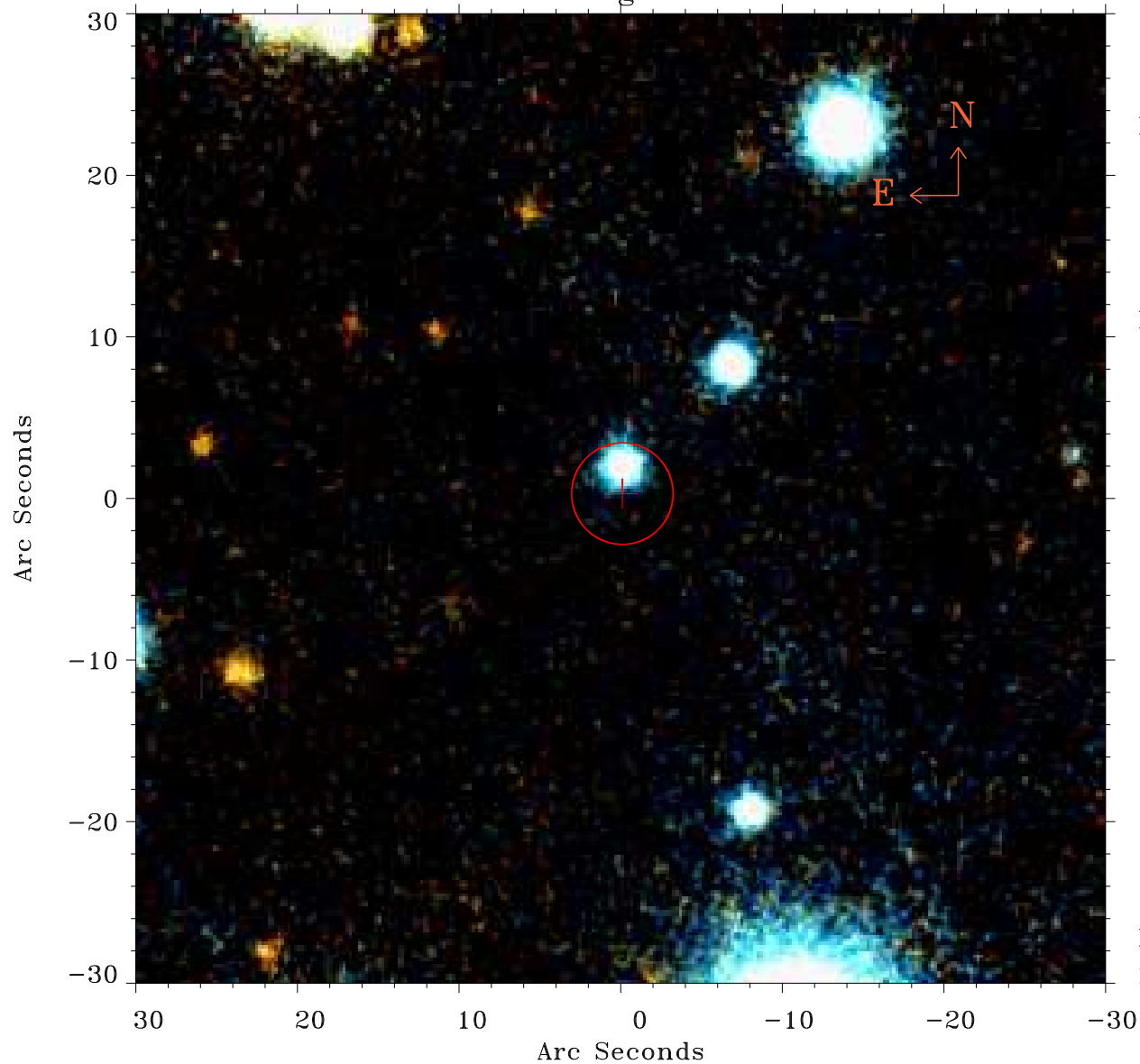


EPIC source finding chart ACDS V10.0



Principal Investigator :
Dr NORBERT SCHARTEL (PS)

XMM target name :
ESO 490-G026

OBS ID : 891802601
Source number : 10

X-ray coordinates :
 α : 06 39 49.03
 δ : -26 03 36.4

Center coordinates :
 α : 06 39 49.02
 δ : -26 03 36.5

Plate reference :
Origin : PanSTARRS-DR1

Color coding :
z band ●
(z+g)/2 ●
g band ●

Error:
R90 : 3.1 arsec

XMM SSC
Nov 29 13:14:34 2021