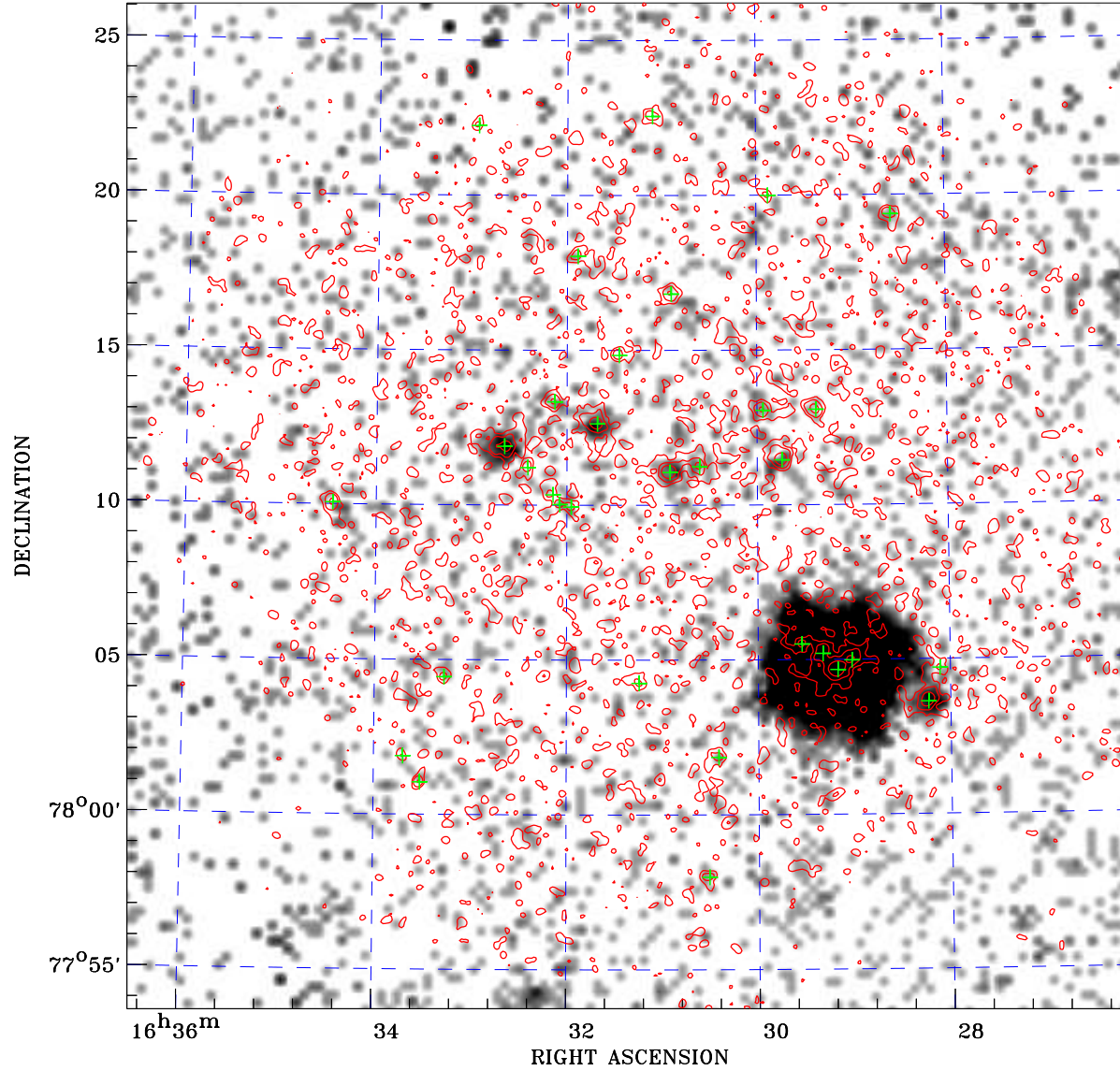


# PDF XMM ROSAT image ACDS V10.0



Principal Investigator :  
Dr Francisco J. Carrera

XMM target name :  
122-013

Observation ID :  
0061940301

Epic image :

$\alpha$  : 16 31 20.32  
 $\delta$  : +78 09 59.0

Energy band : 0.2-12.0 keV

MOS1 : 4989 s  
MOS2 : 4992 s  
PN : 0 s

Contour levels (counts) :  
 $2\sigma$  :1.824E-01  $7\sigma$  :4.902E-01  
 $30\sigma$  :1.906E+00

Nearest ROSAT image  
from Epic image center :  
Observation : 141501p  
Instrument : PSPCB  
 $\alpha$  : 16 30 02.69  
 $\delta$  : +78 01 11.4

Other ROSAT images :  
None

XMM SSC  
Apr 24 11:55:05 2019

ROSAT image gray scale (Log) :  
2.396E-05 1.714E-03  
(counts s<sup>-1</sup>)

⊙ Epic image contour  
levels at 2, 7 and 30 $\sigma$

+ Detected Epic sources