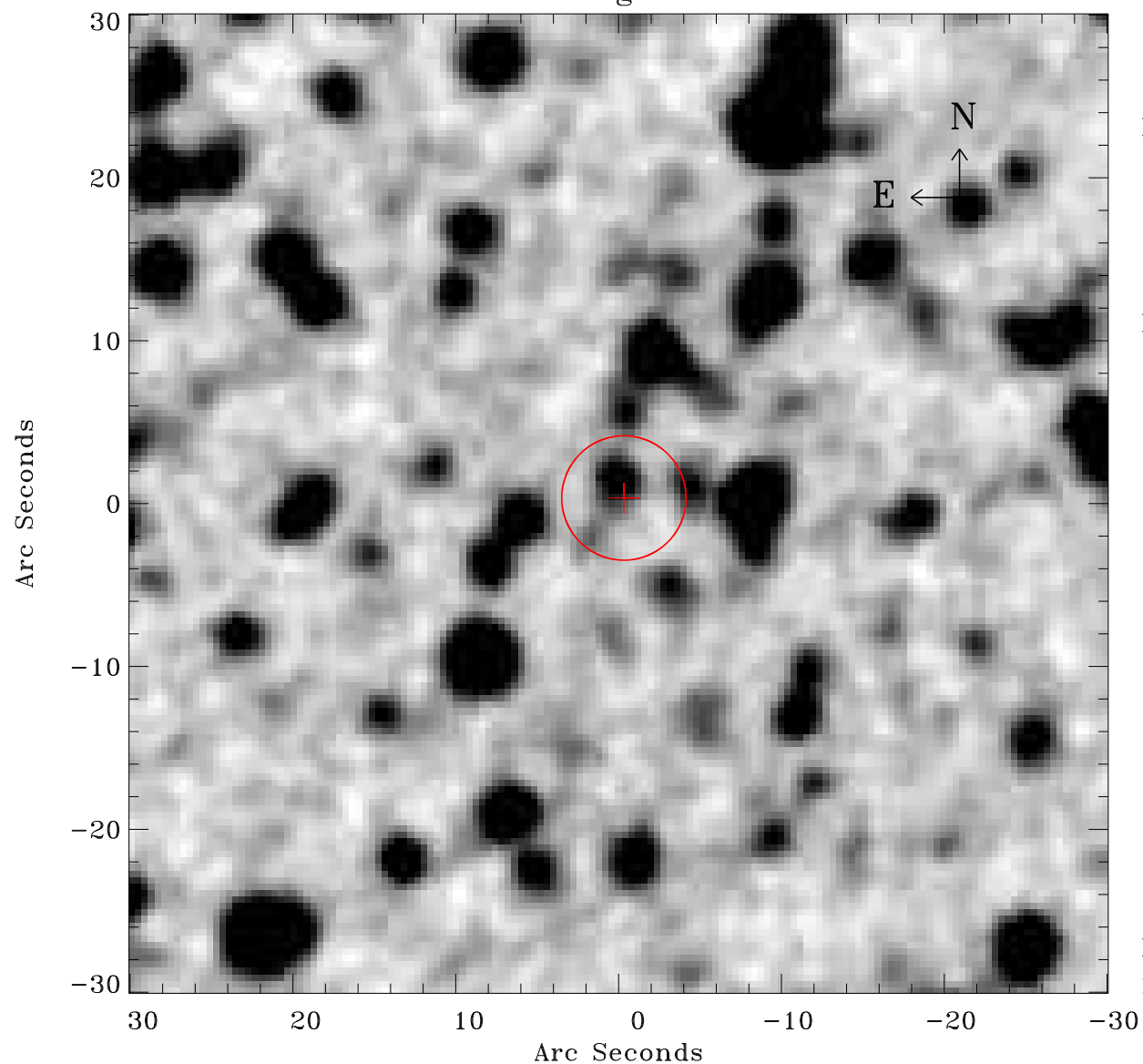


# EPIC source finding chart ACDS V10.0



Principal Investigator :

Mr Bruno Altieri

XMM target name :

SEP-r735

OBS ID : 162160501

Source number : 58

X-ray coordinates :

$\alpha$  : 05 59 08.18

$\delta$  : -66 36 02.1

Center coordinates :

$\alpha$  : 05 59 08.17

$\delta$  : -66 36 02.0

Plate reference :

Origin : CDS HIPs Network

Plate : MAMA srcj

Pixel : 0.40 "/pix

Error circle :

$R_{90}$  (") : 3.8

XMM SSC

May 3 05:48:35 2019