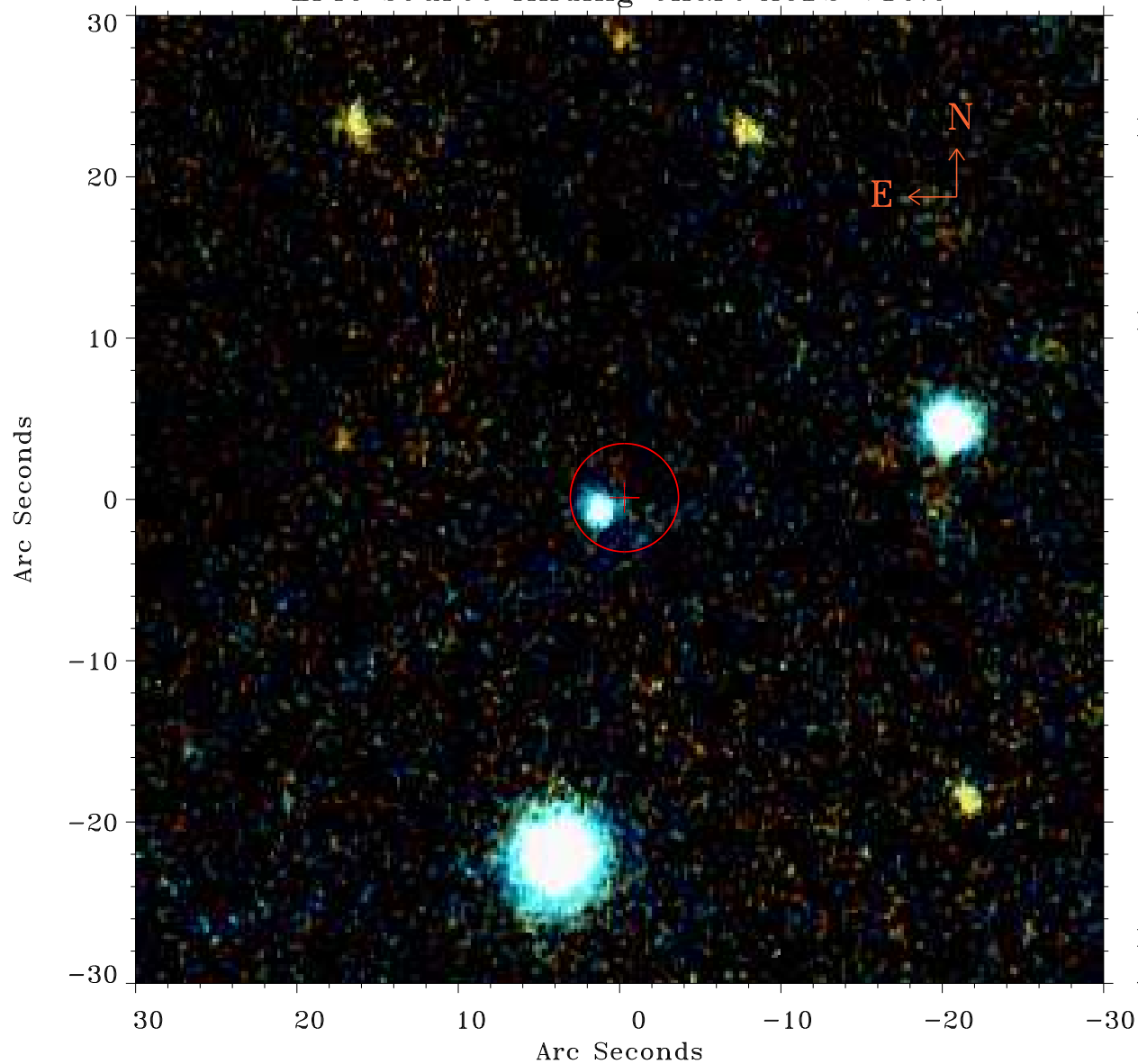


# EPIC source finding chart ACDS V10.0



Principal Investigator :

Dr Kazushi Iwasawa

XMM target name :

NGC2633

OBS ID : 25541501

Source number : 3

X-ray coordinates :

$\alpha$  : 08 48 54.79

$\delta$  : +74 10 35.0

Center coordinates :

$\alpha$  : 08 48 54.81

$\delta$  : +74 10 35.1

Plate reference :

Origin : PanSTARRS-DR1

Color coding :

z band ●

(z+g)/2 ●

g band ●

Error:

R90 : 3.3 arcsec

XMM SSC

Apr 22 15:59:36 2019