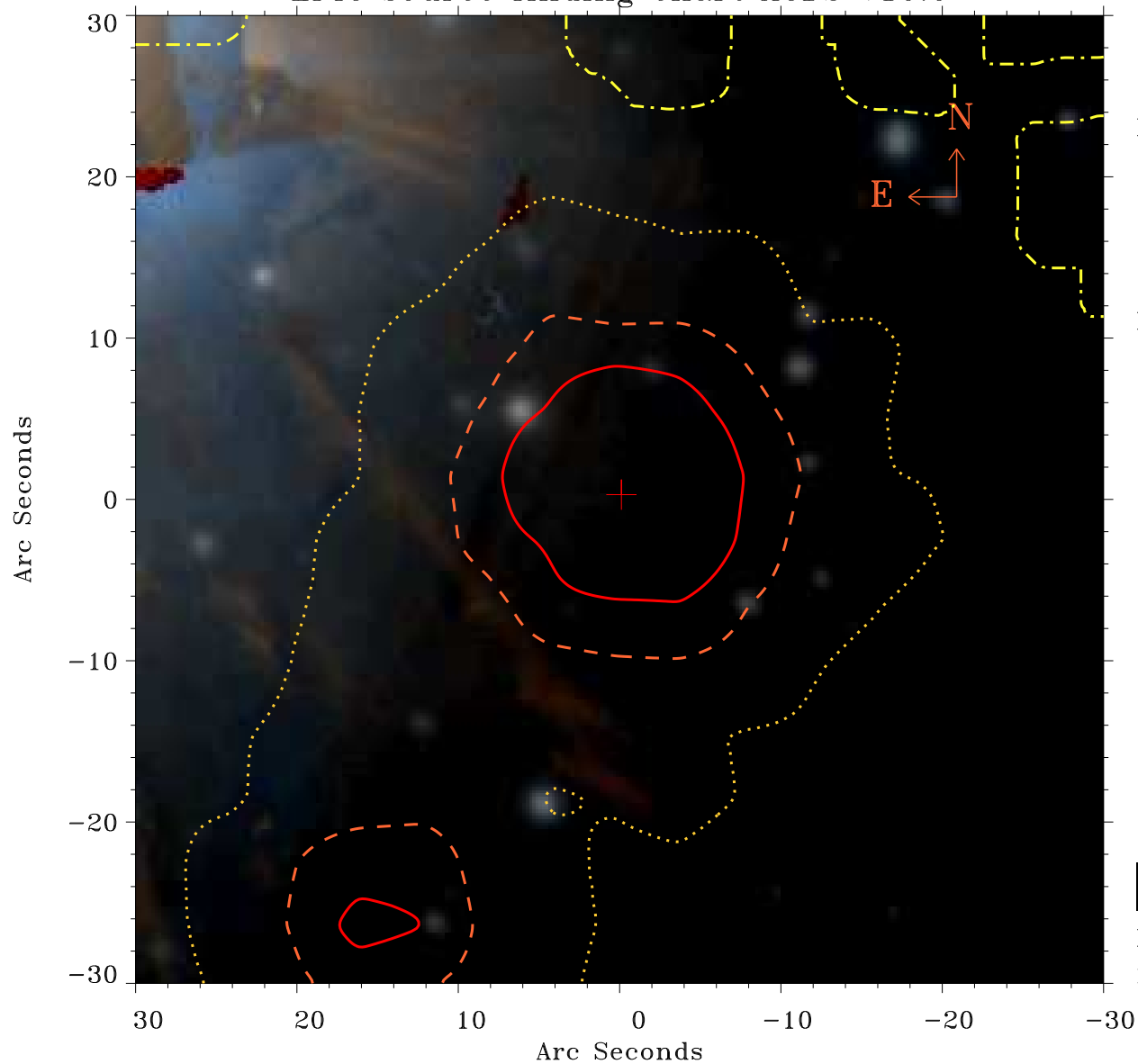


# EPIC source finding chart ACDS V10.0



Principal Investigator :  
Dr Alexander Hempelmann

XMM target name :  
61 Cyg A+B

OBS ID : 41740301  
Source number : 1

X-ray coordinates :  
 $\alpha$  : 21 06 55.02  
 $\delta$  : +38 45 06.2

Center coordinates :  
 $\alpha$  : 21 06 55.01  
 $\delta$  : +38 45 06.1

Plate reference :  
Origin : PanSTARRS-DR1

Color coding :  
z band ●  
(z+g)/2 ●  
g band ●

Contour levels (counts) :  
1.00E+00 1.57E+01  
6.21E+01 1.42E+02

XMM SSC  
May 3 03:54:00 2019