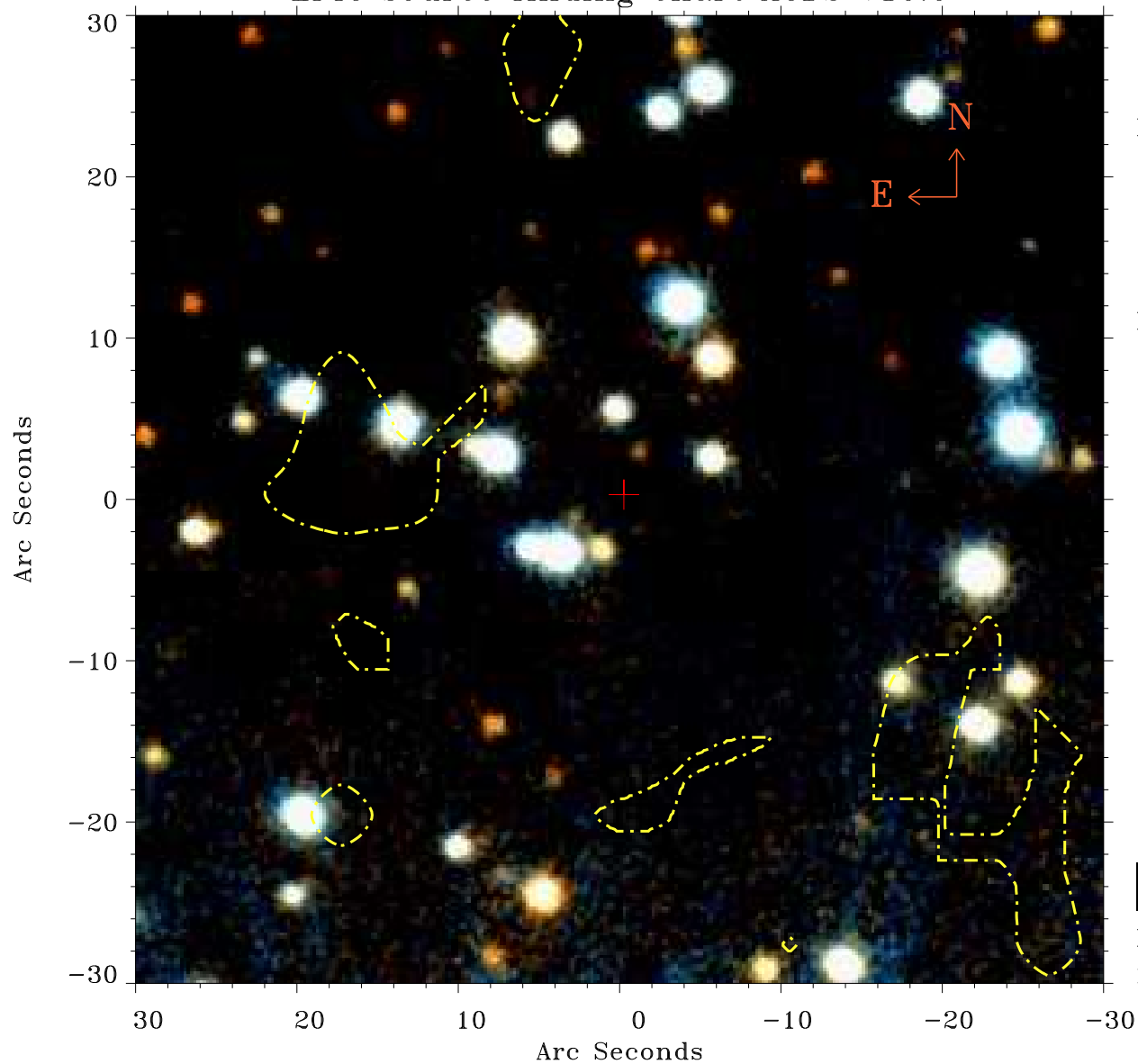


EPIC source finding chart ACDS V10.0



Principal Investigator :
Dr Alexander Hempelmann

XMM target name :
61 Cyg A+B

OBS ID : 41740301
Source number : 33

X-ray coordinates :
 α : 21 06 59.36
 δ : +38 47 51.3

Center coordinates :
 α : 21 06 59.37
 δ : +38 47 51.2

Plate reference :
Origin : PanSTARRS-DR1

Color coding :
z band ●
(z+g)/2 ●
g band ●

Contour levels (counts) :
1.00E+00 1.57E+01
6.25E+01 1.43E+02

XMM SSC
May 3 03:54:16 2019