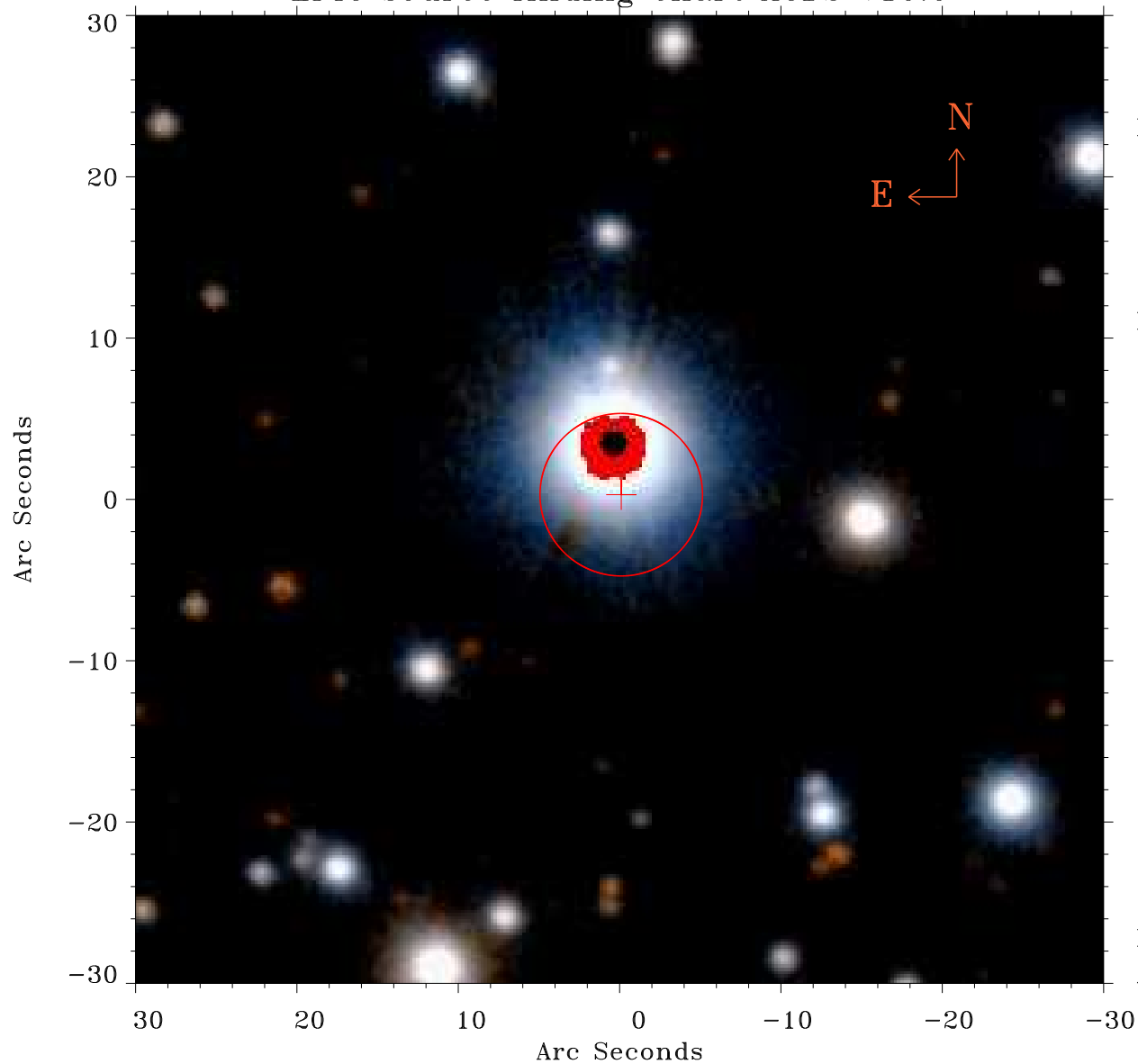


# EPIC source finding chart ACDS V10.0



Principal Investigator :  
Dr Alexander Hempelmann

XMM target name :  
61 Cyg A+B

OBS ID : 41740901  
Source number : 18

X-ray coordinates :  
 $\alpha$  : 21 07 03.46  
 $\delta$  : +38 41 49.3

Center coordinates :  
 $\alpha$  : 21 07 03.46  
 $\delta$  : +38 41 49.2

Plate reference :  
Origin : PanSTARRS-DR1

Color coding :  
z band ●  
(z+g)/2 ●  
g band ●

Error:  
R90 : 5.0 arsec

XMM SSC  
Apr 23 23:24:55 2019