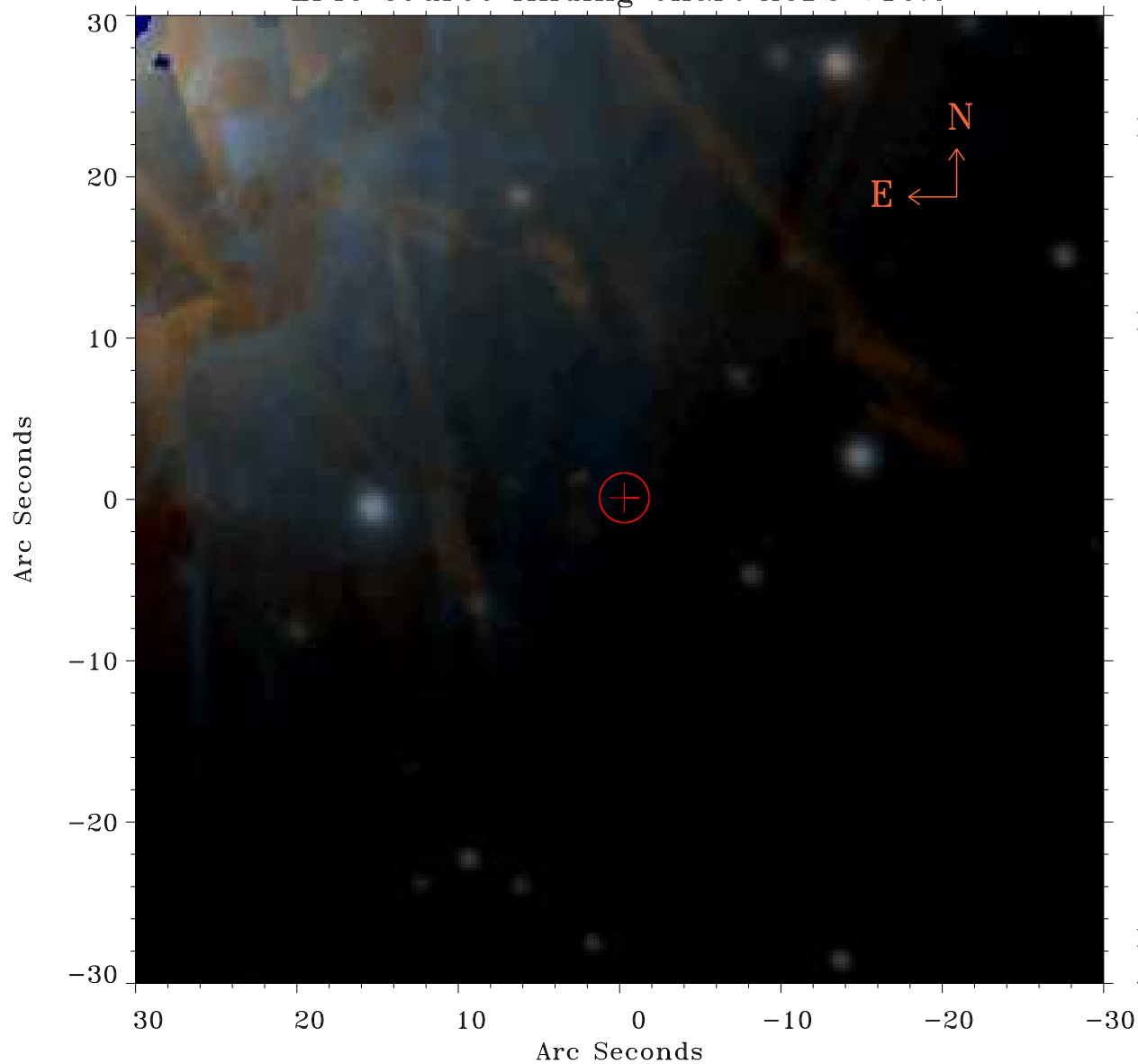


EPIC source finding chart ACDS V10.0



Principal Investigator :
Dr Alexander Hempelmann

XMM target name :
61 Cyg A+B

OBS ID : 41741001
Source number : 2

X-ray coordinates :
 α : 21 06 56.69
 δ : +38 44 44.3

Center coordinates :
 α : 21 06 56.70
 δ : +38 44 44.4

Plate reference :
Origin : PanSTARRS-DR1

Color coding :
z band ●
(z+g)/2 ●
g band ●

Error:
R90 : 1.5 arsec

XMM SSC
Apr 18 17:09:44 2019