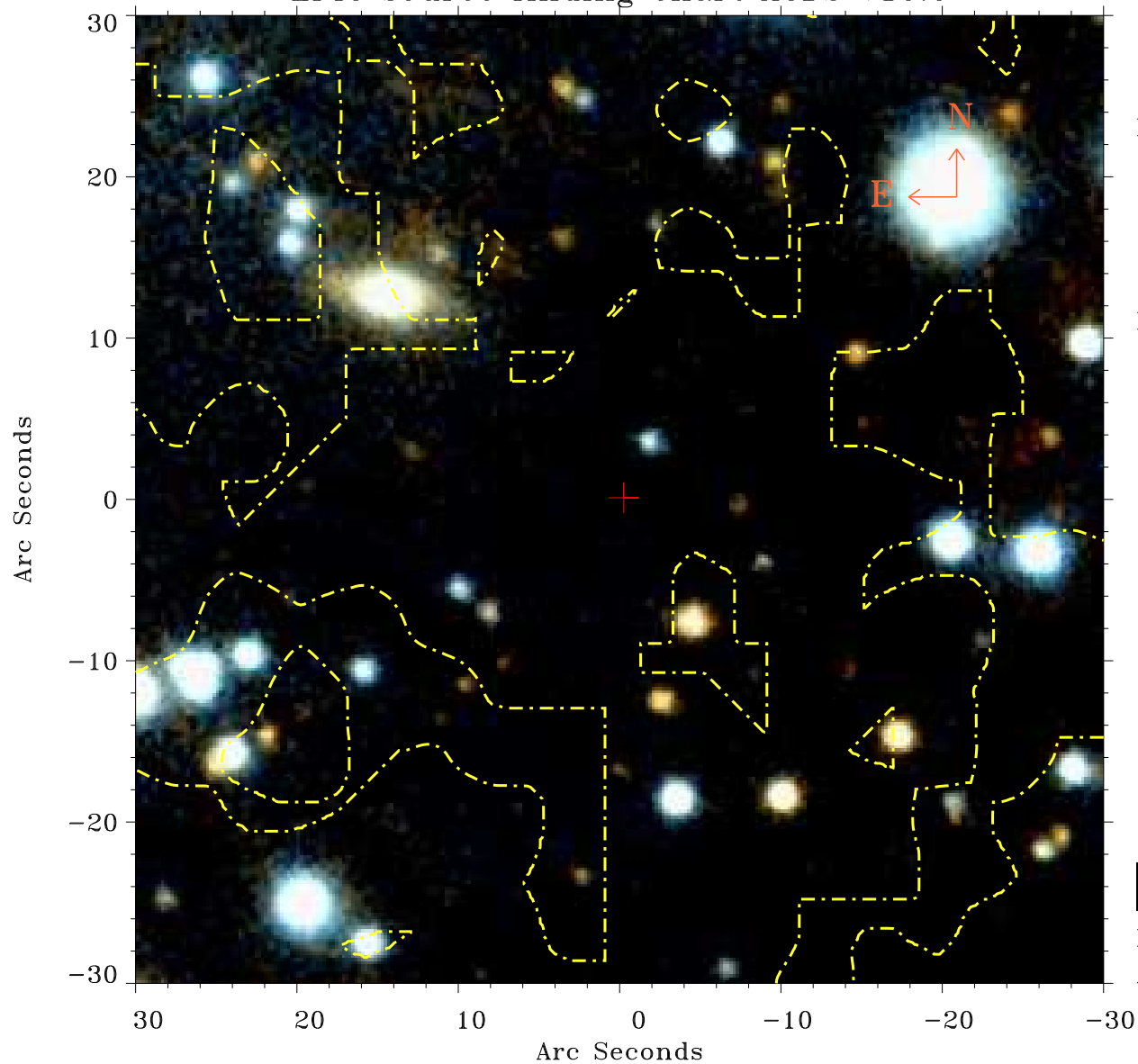


EPIC source finding chart ACDS V10.0



Principal Investigator :
Dr Alexander Hempelmann

XMM target name :
61 Cyg A+B

OBS ID : 41741001
Source number : 24

X-ray coordinates :
 α : 21 06 49.42
 δ : +38 44 09.2

Center coordinates :
 α : 21 06 49.42
 δ : +38 44 09.3

Plate reference :
Origin : PanSTARRS-DR1

Color coding :
z band ●
(z+g)/2 ●
g band ●

Contour levels (counts) :
1.00E+00 1.55E+01
6.10E+01 1.39E+02

XMM SSC
Apr 18 17:09:31 2019