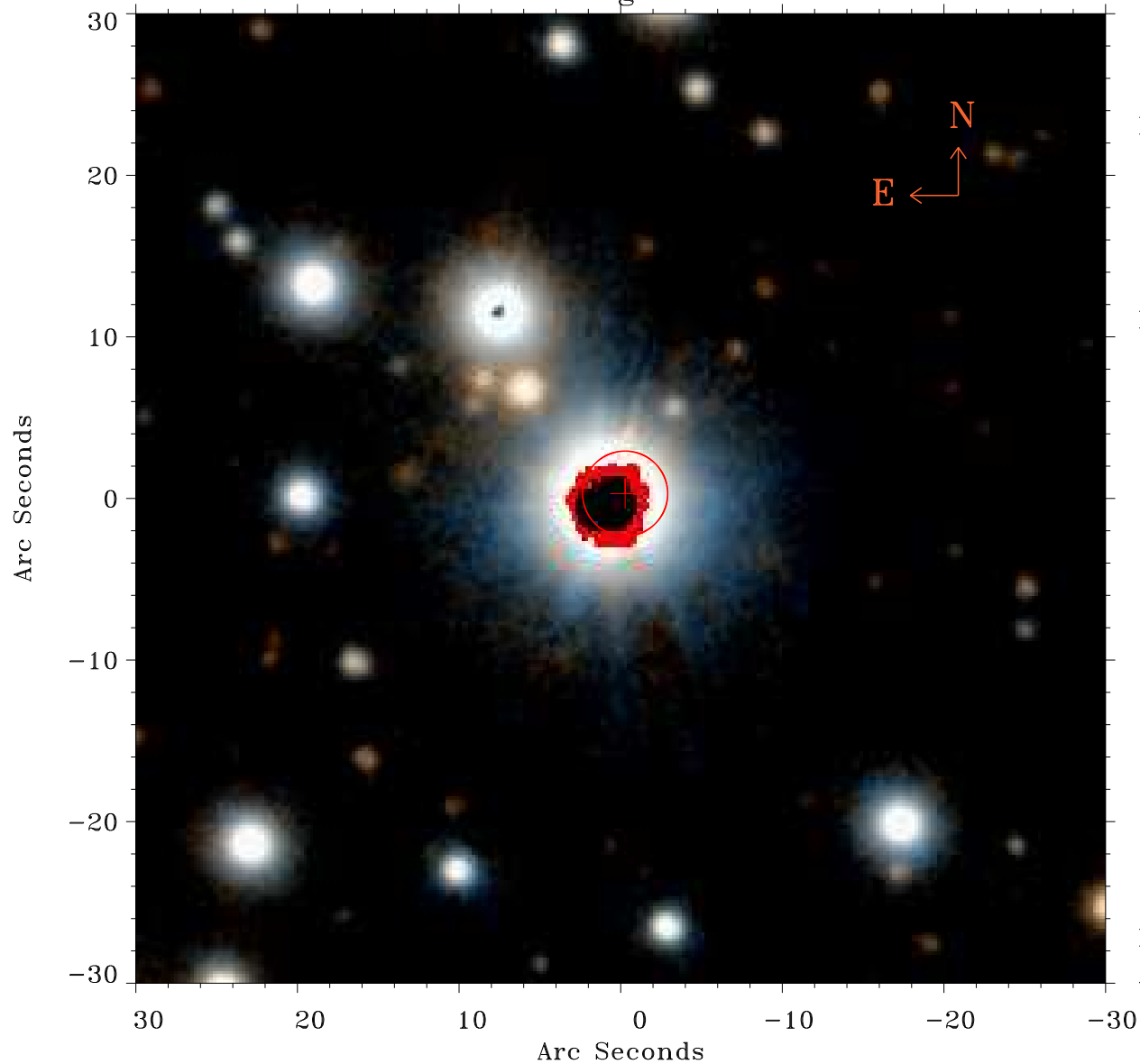


# EPIC source finding chart ACDS V10.0



Principal Investigator :  
Dr Alexander Hempelmann

XMM target name :  
61 Cyg A+B

OBS ID : 41741001  
Source number : 4

X-ray coordinates :  
 $\alpha$  : 21 06 32.18  
 $\delta$  : +38 42 47.2

Center coordinates :  
 $\alpha$  : 21 06 32.19  
 $\delta$  : +38 42 47.1

Plate reference :  
Origin : PanSTARRS-DR1

Color coding :  
z band ●  
(z+g)/2 ●  
g band ●

Error:  
R90 : 2.6 arsec

XMM SSC  
Apr 18 17:08:37 2019