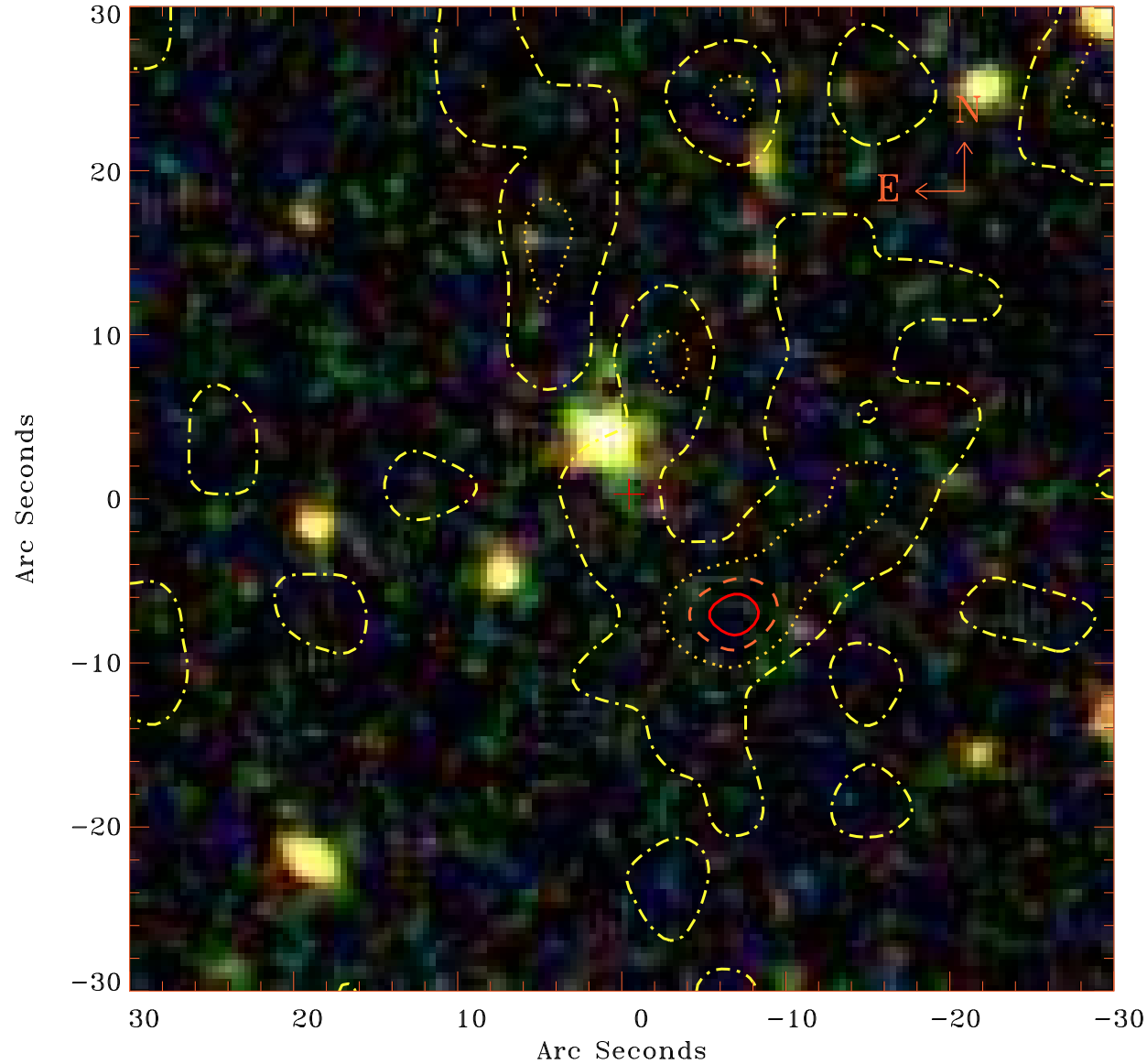


# EPIC source finding chart V10.0



Principal Investigator :

Dr Comastri Andrea

XMM target name :

ERO field

OBS ID : 57560301

Source number : 78

X-ray coordinates :

$\alpha$  : 14 49 40.00

$\delta$  : +08 47 46.3

Center coordinates :

$\alpha$  : 14 49 40.01

$\delta$  : +08 47 46.4

Plate reference :

Origin : SDSS

Color coding :

i band ●

r band ●

g band ●

Contour levels (counts) :



XMM SSC

Apr 21 10:40:16 2019