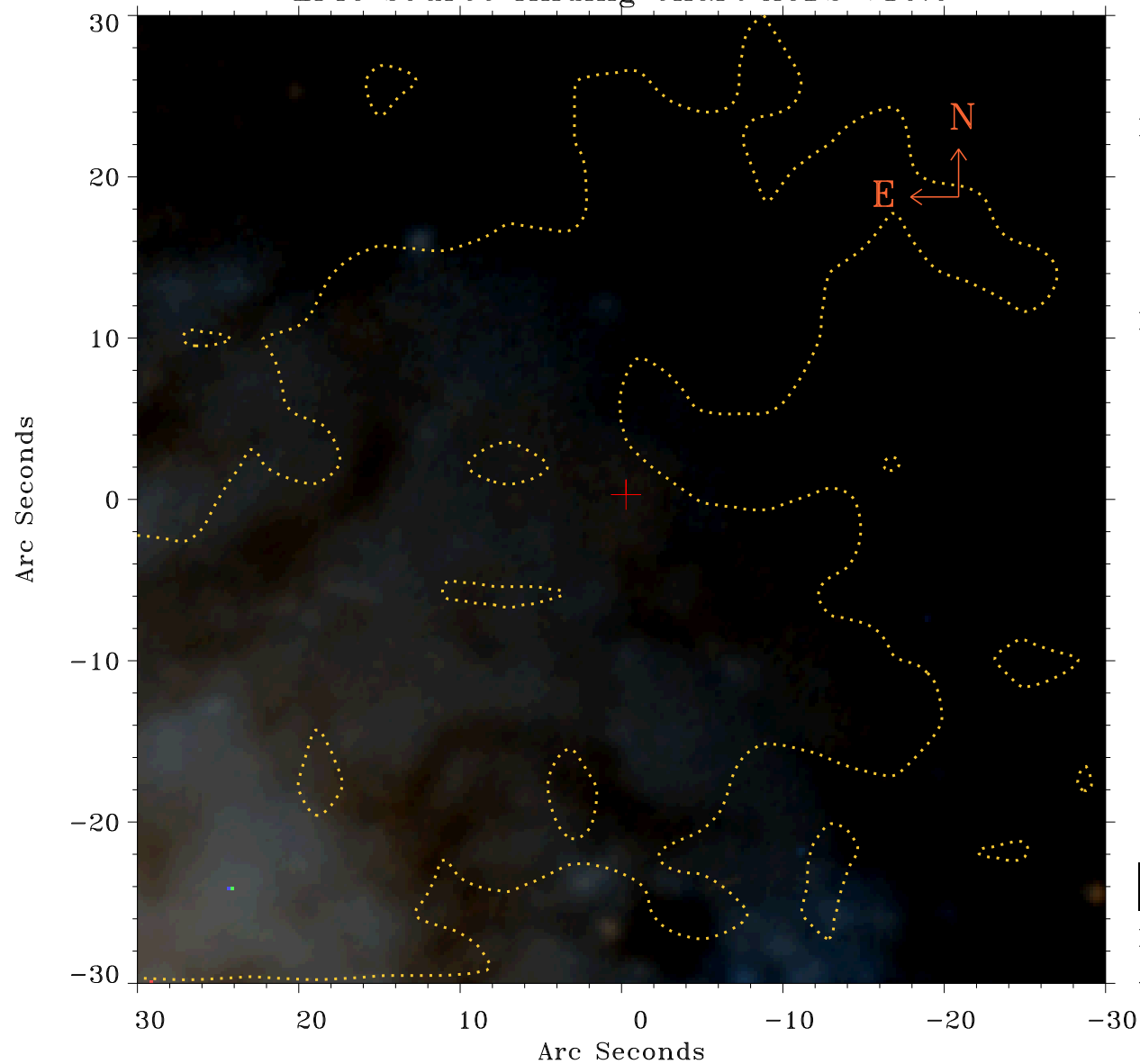


EPIC source finding chart ACDS V10.0



Principal Investigator :

Dr Lincoln J. Greenhill

XMM target name :

NGC 4258

OBS ID : 59140401

Source number : 4

X-ray coordinates :

α : 12 18 52.58

δ : +47 19 13.4

Center coordinates :

α : 12 18 52.59

δ : +47 19 13.3

Plate reference :

Origin : PanSTARRS-DR1

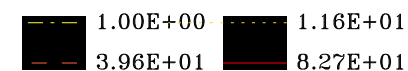
Color coding :

z band ●

(z+g)/2 ●

g band ●

Contour levels (counts) :



XMM SSC

Apr 27 06:05:19 2019