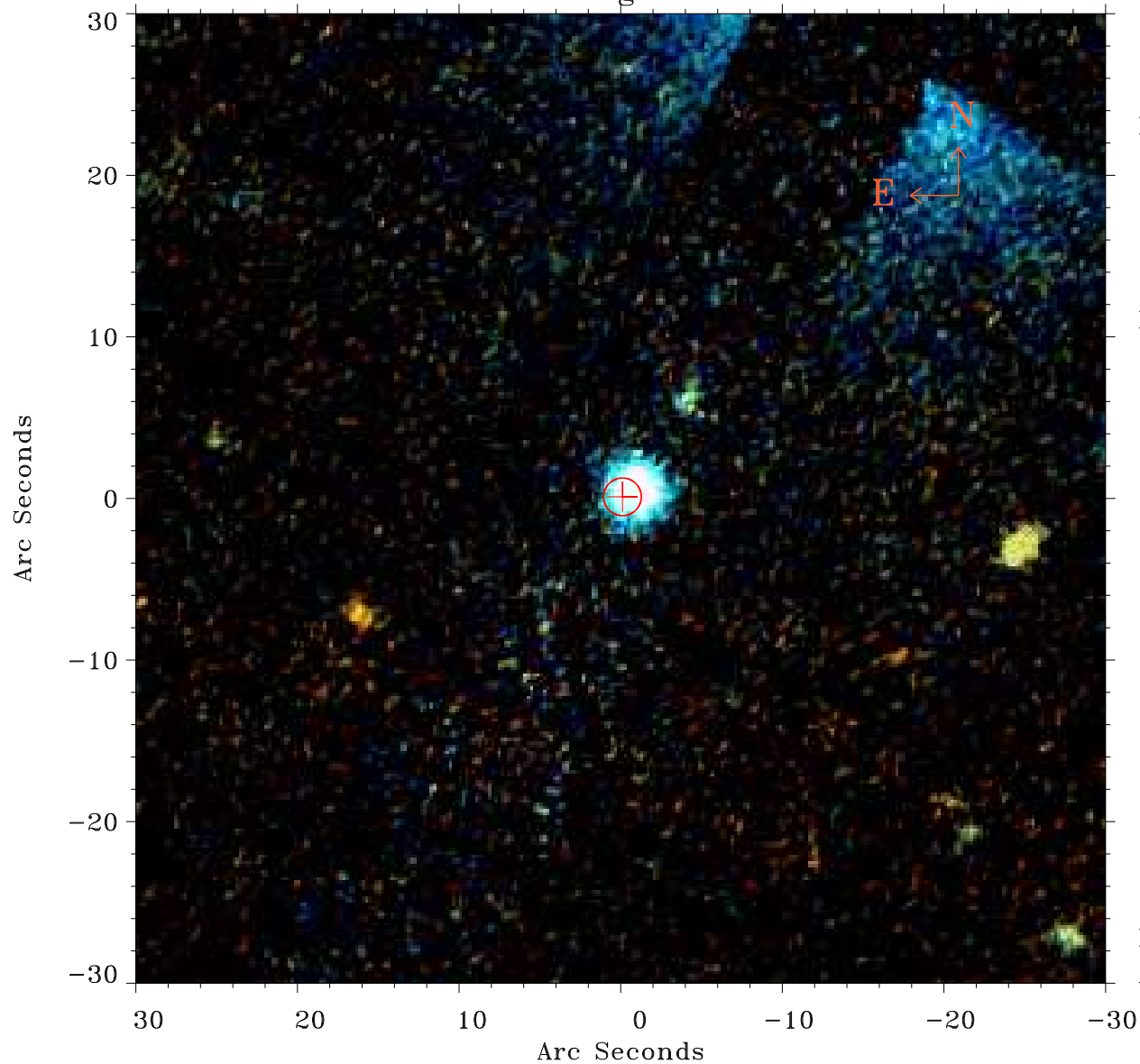


# EPIC source finding chart ACDS V10.0



Principal Investigator :

Dr Lincoln J. Greenhill

XMM target name :

NGC 4258

OBS ID : 59140401

Source number : 10

X-ray coordinates :

$\alpha$  : 12 19 52.40

$\delta$  : +47 20 58.1

Center coordinates :

$\alpha$  : 12 19 52.40

$\delta$  : +47 20 58.2

Plate reference :

Origin : PanSTARRS-DR1

Color coding :

z band ●

(z+g)/2 ●

g band ●

Error:

R90 : 1.2 arcsec

XMM SSC

Apr 27 06:08:17 2019