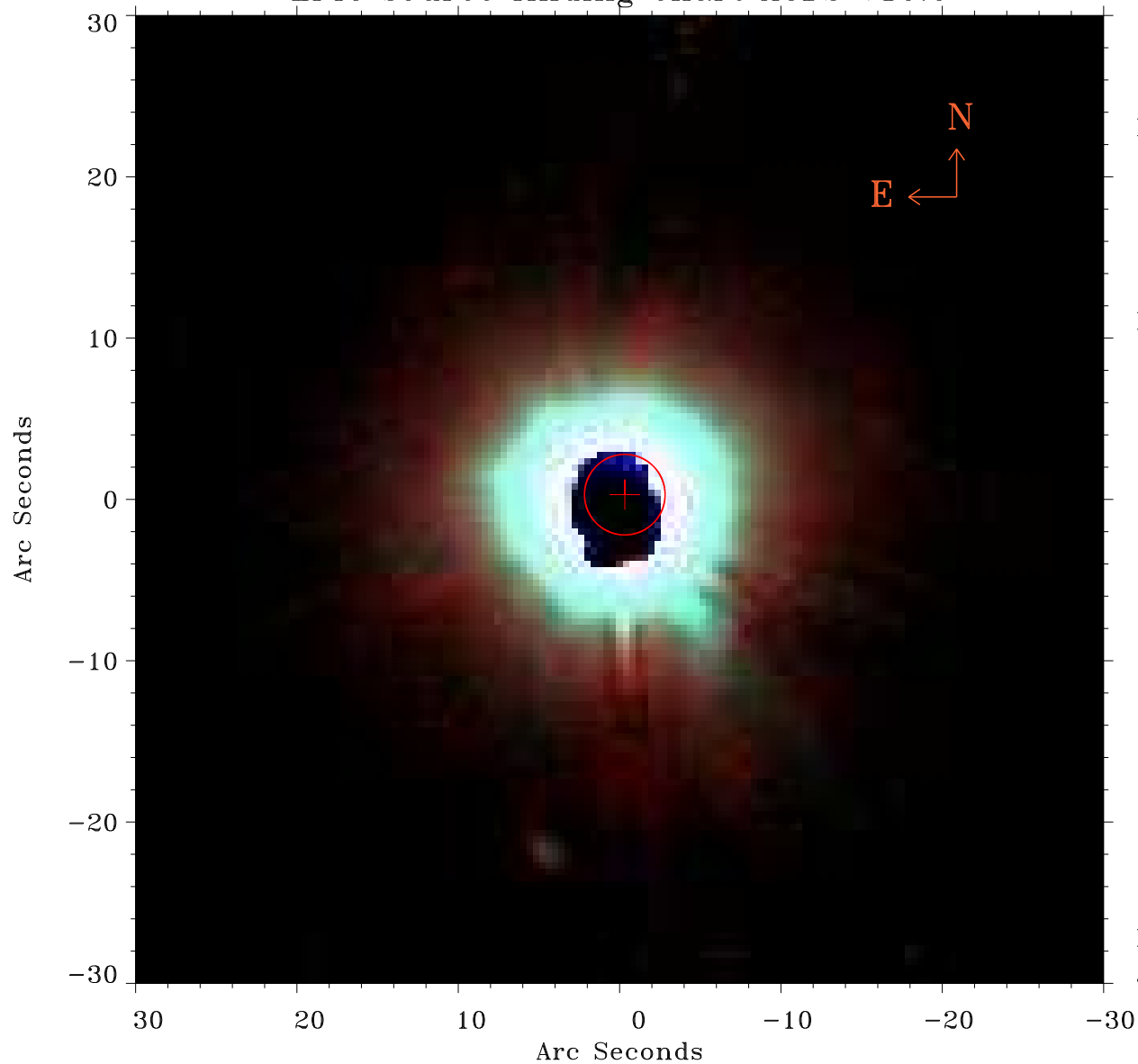


# EPIC source finding chart ACDS V10.0



Principal Investigator :

Dr Francisco J. Carrera

XMM target name :

278-010

OBS ID : 61940101

Source number : 40

X-ray coordinates :

$\alpha$  : 13 31 43.33

$\delta$  : +11 11 32.6

Center coordinates :

$\alpha$  : 13 31 43.32

$\delta$  : +11 11 32.7

Plate reference :

Origin : PanSTARRS-DR1

Color coding :

z band ●

(z+g)/2 ●

g band ●

Error:

R90 : 2.5 arcsec

XMM SSC

Jan 19 20:04:05 2025