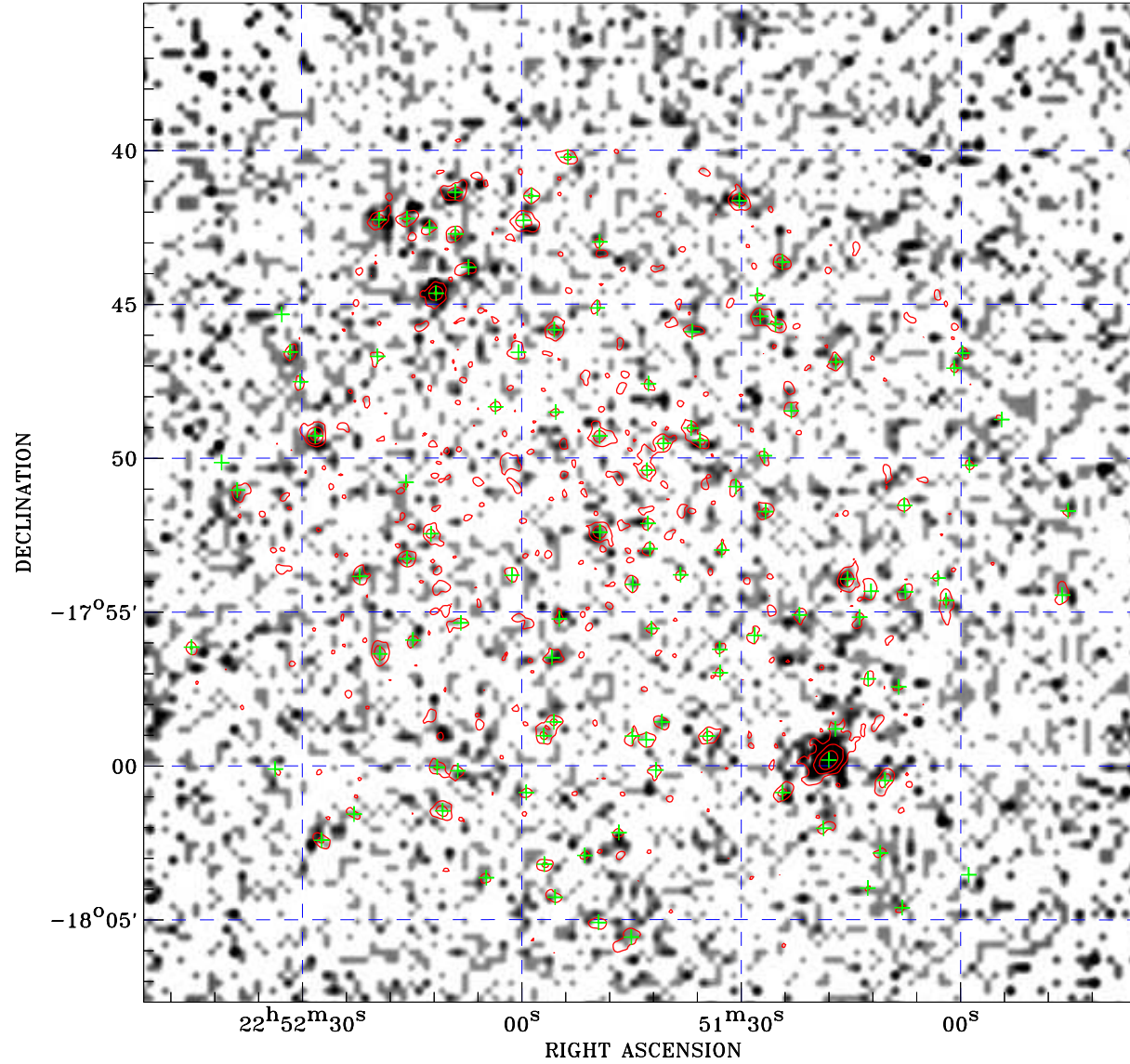


PDF XMM ROSAT image ACDS V10.0



ROSAT image gray scale (Log) :

< 6.996E-05 > 4.735E-04

(counts s⁻¹)

⊙ Epic image contour
levels at 2, 7 and 30 σ

+ Detected Epic sources

Principal Investigator :
Dr Alberto Franceschini

XMM target name :
IRAS22491-18

Observation ID :
0081340901

Epic image :
 α : 22 51 43.40
 δ : -17 51 26.9
Energy band : 0.2-12.0 keV
MOS1 : 22513 s
MOS2 : 22492 s
PN : 19337 s

Contour levels (counts) :
2 σ :1.504E+00 7 σ :3.455E+00
30 σ :1.243E+01

Nearest ROSAT image
from Epic image center :
Observation : 701235p
Instrument : PSPCB
 α : 22 52 03.03
 δ : -17 55 12.2

Other ROSAT images :
None

XMM SSC
May 9 18:42:47 2019