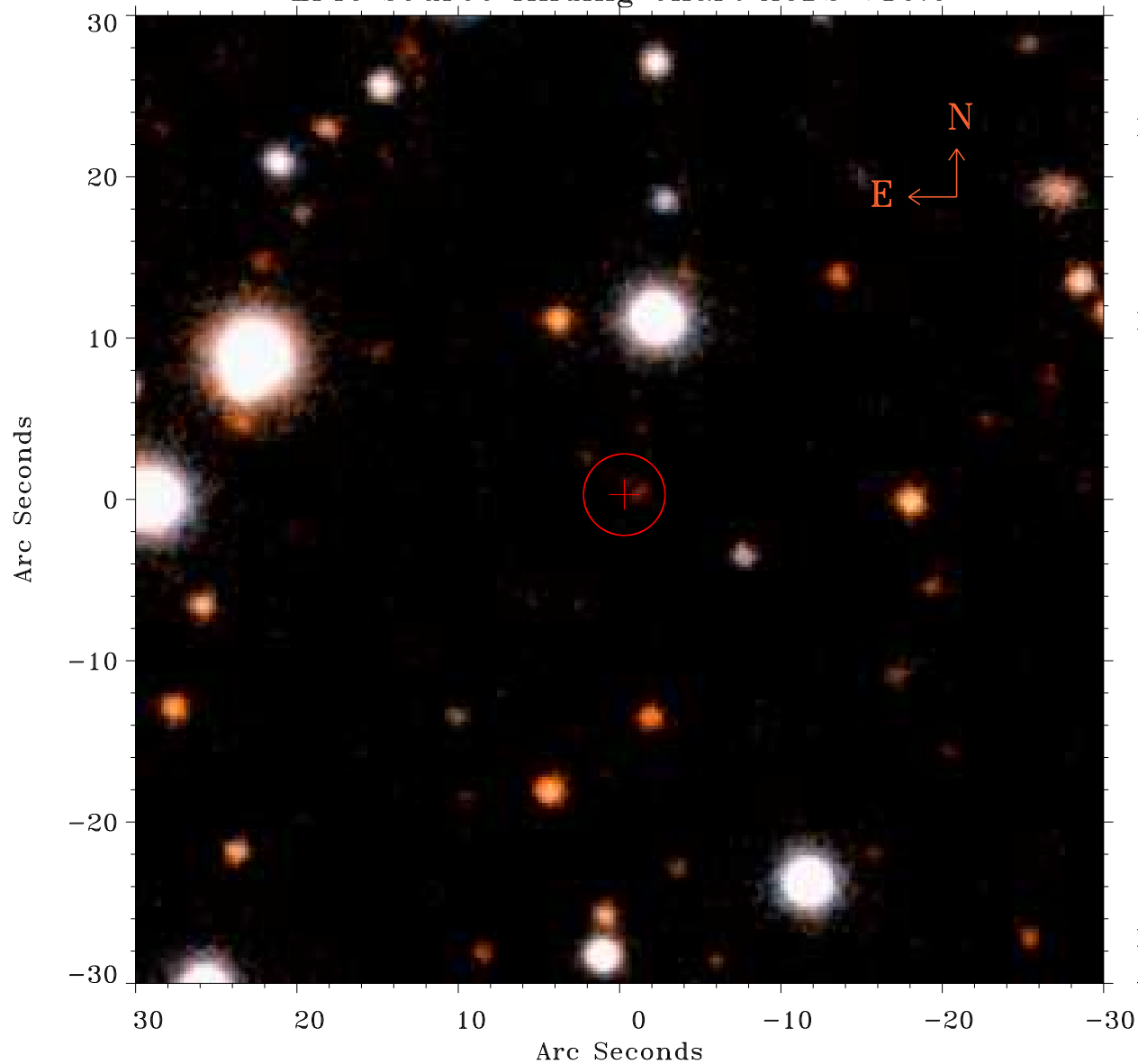


# EPIC source finding chart ACDS V10.0



Principal Investigator :

Dr Emi Miyata

XMM target name :

Cygnus Loop (pos1)

OBS ID : 82540101

Source number : 76

X-ray coordinates :

$\alpha$  : 20 56 02.76

$\delta$  : +31 52 54.7

Center coordinates :

$\alpha$  : 20 56 02.77

$\delta$  : +31 52 54.6

Plate reference :

Origin : PanSTARRS-DR1

Color coding :

z band ●

(z+g)/2 ●

g band ●

Error:

R90 : 2.5 arsec

XMM SSC

Apr 19 23:06:37 2019