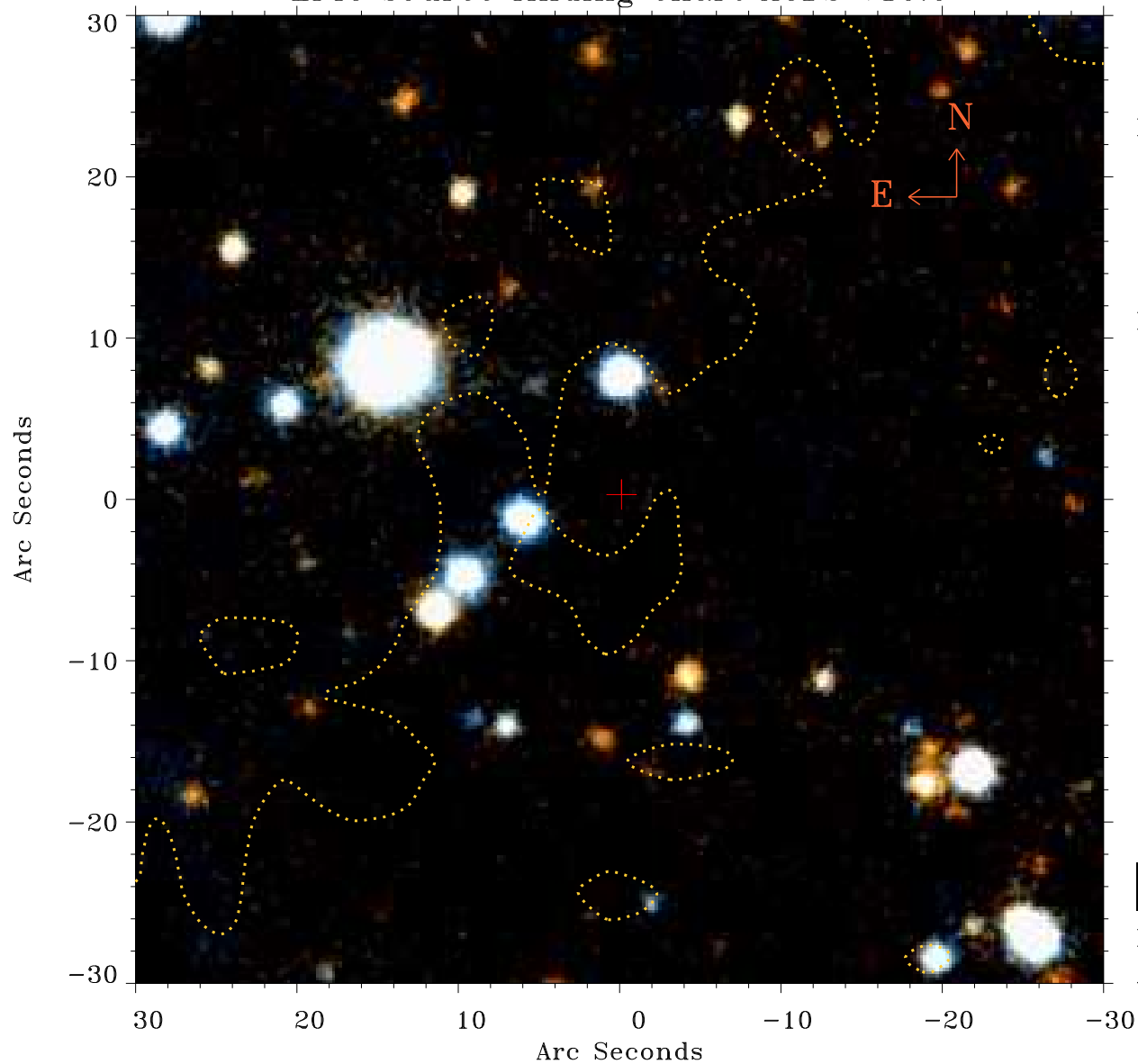


# EPIC source finding chart ACDS V10.0



Principal Investigator :

Dr Emi Miyata

XMM target name :

Cygnus Loop (pos1)

OBS ID : 82540101

Source number : 110

X-ray coordinates :

$\alpha$  : 20 56 22.96

$\delta$  : +31 50 44.9

Center coordinates :

$\alpha$  : 20 56 22.96

$\delta$  : +31 50 44.8

Plate reference :

Origin : PanSTARRS-DR1

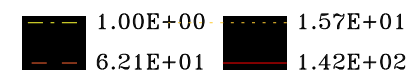
Color coding :

z band ●

(z+g)/2 ●

g band ●

Contour levels (counts) :



XMM SSC

Apr 19 23:11:42 2019