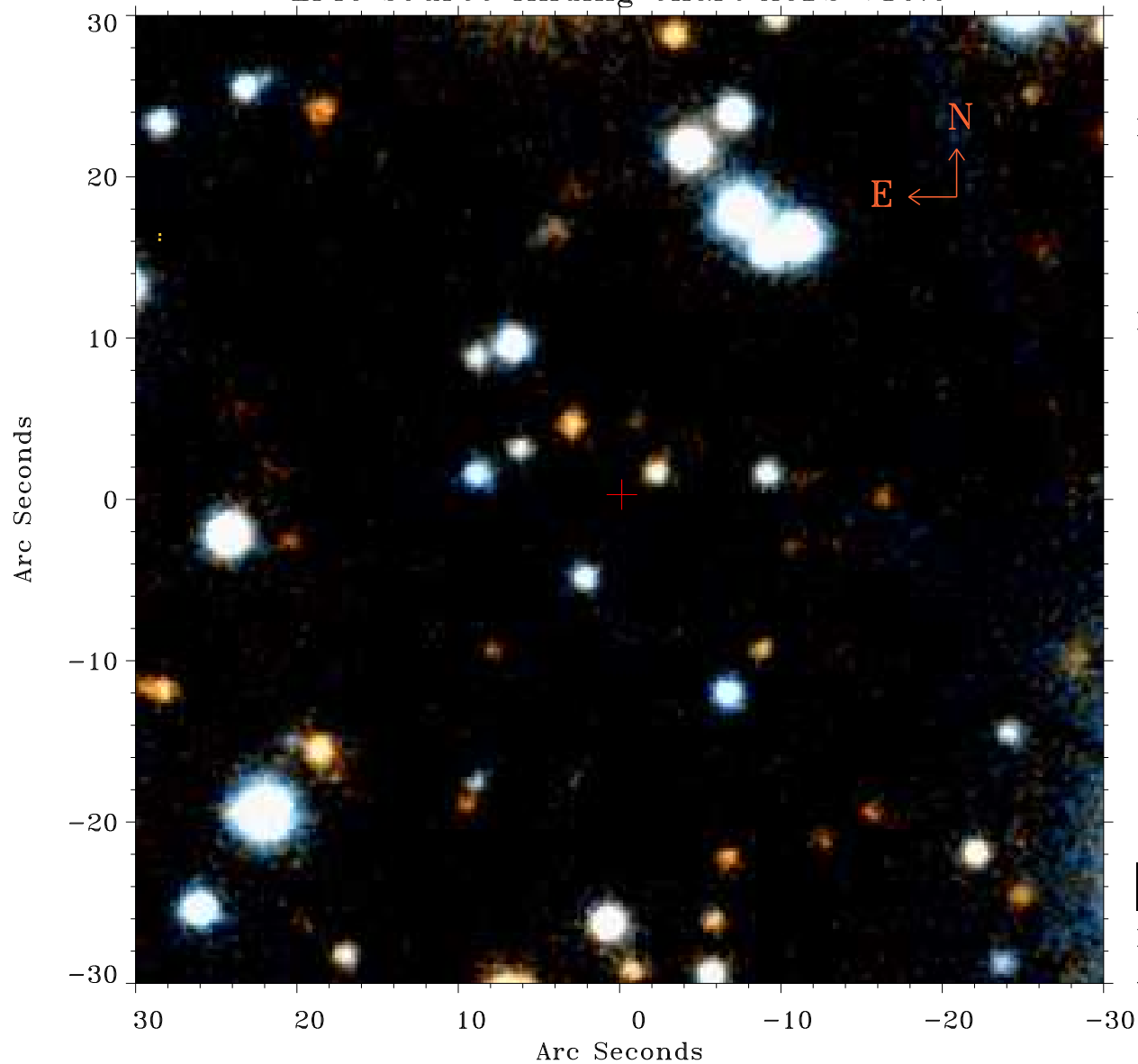


# EPIC source finding chart ACDS V10.0



Principal Investigator :

Dr Emi Miyata

XMM target name :

Cygnus Loop (pos1)

OBS ID : 82540101

Source number : 137

X-ray coordinates :

$\alpha$  : 20 55 24.61

$\delta$  : +31 36 08.8

Center coordinates :

$\alpha$  : 20 55 24.60

$\delta$  : +31 36 08.7

Plate reference :

Origin : PanSTARRS-DR1

Color coding :

z band ●

(z+g)/2 ●

g band ●

Contour levels (counts) :



XMM SSC

Apr 19 23:00:07 2019