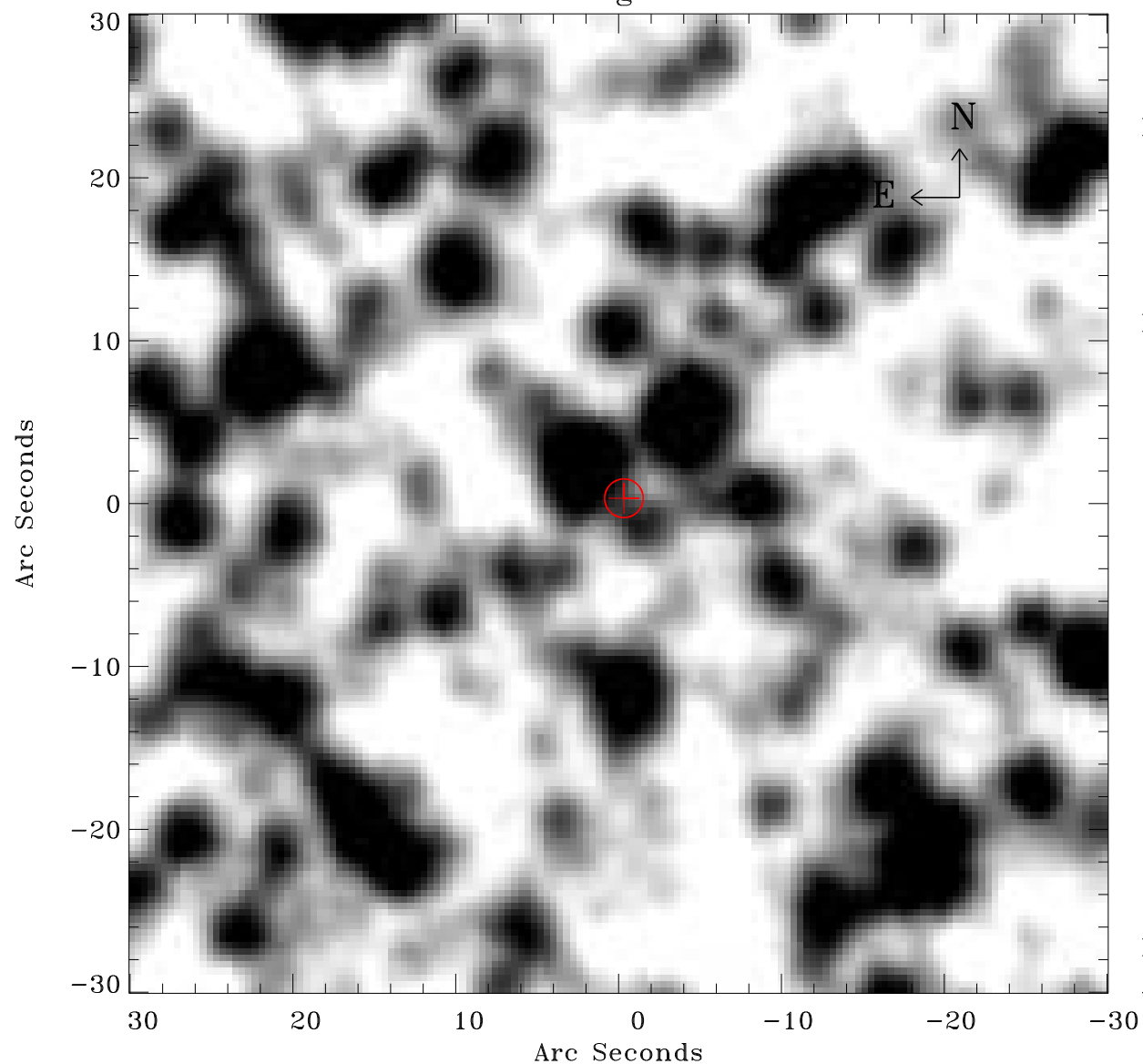


# EPIC source finding chart ACDS V10.0



Principal Investigator :

Dr Wolfgang Pietsch

XMM target name :

SMC Pointing 1

OBS ID : 84200101

Source number : 1

X-ray coordinates :

$\alpha$  : 00 55 27.86

$\delta$  : -72 10 58.9

Center coordinates :

$\alpha$  : 00 55 27.84

$\delta$  : -72 10 58.8

Plate reference :

Origin : CDS HIPs Network

Plate : MAMA srcj

Pixel : 0.40 "/pix

Error circle :

$R_{90}$  (") : 1.2

XMM SSC

Apr 22 16:18:58 2019