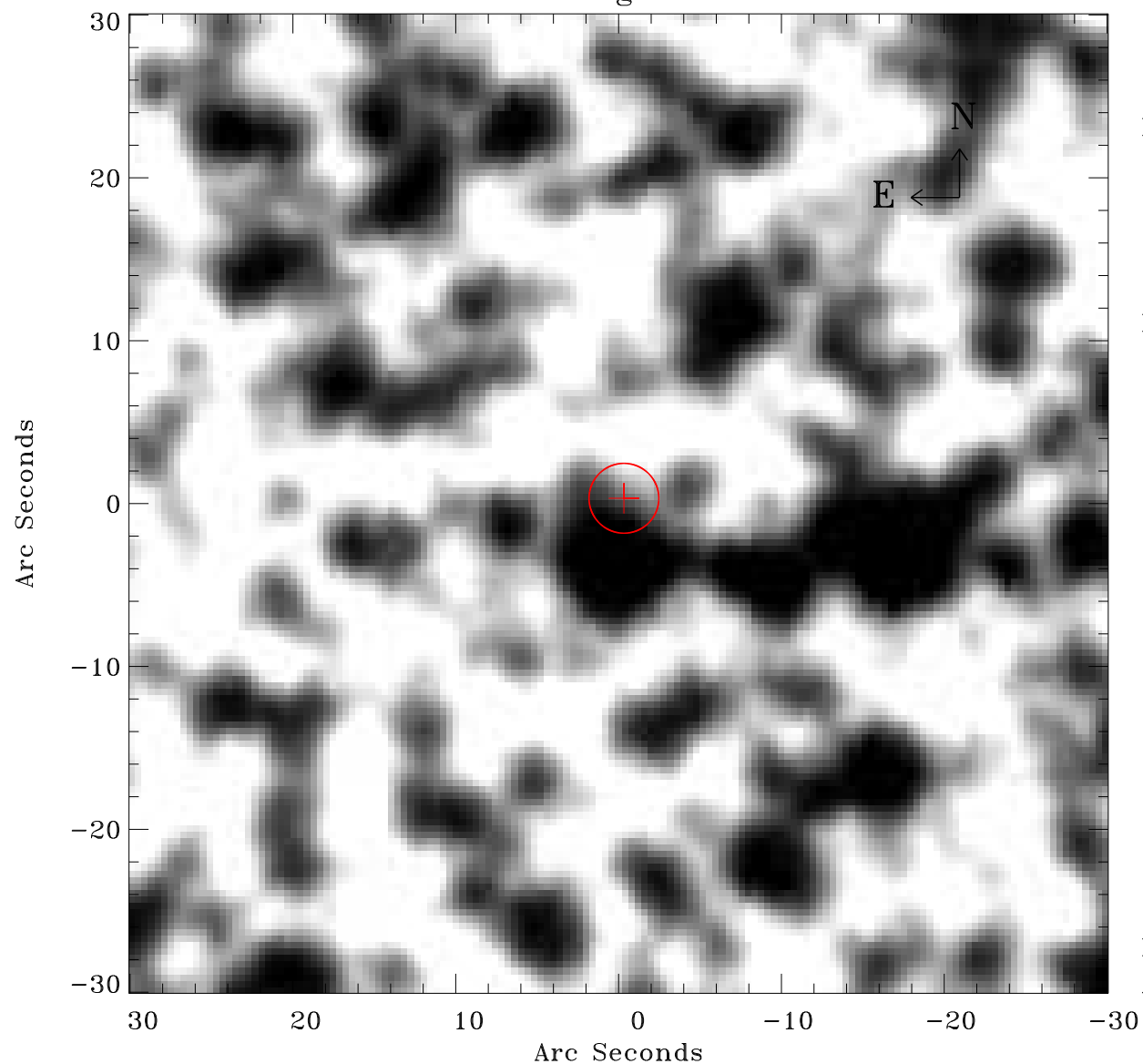


# EPIC source finding chart ACDS V10.0



Principal Investigator :

Dr Wolfgang Pietsch

XMM target name :

SMC Pointing 1

OBS ID : 84200101

Source number : 20

X-ray coordinates :

$\alpha$  : 00 54 03.68

$\delta$  : -72 26 29.1

Center coordinates :

$\alpha$  : 00 54 03.66

$\delta$  : -72 26 29.1

Plate reference :

Origin : CDS HIPs Network

Plate : MAMA srcj

Pixel : 0.40 "/pix

Error circle :

$R_{90}$  (") : 2.1

XMM SSC

Apr 22 16:14:37 2019