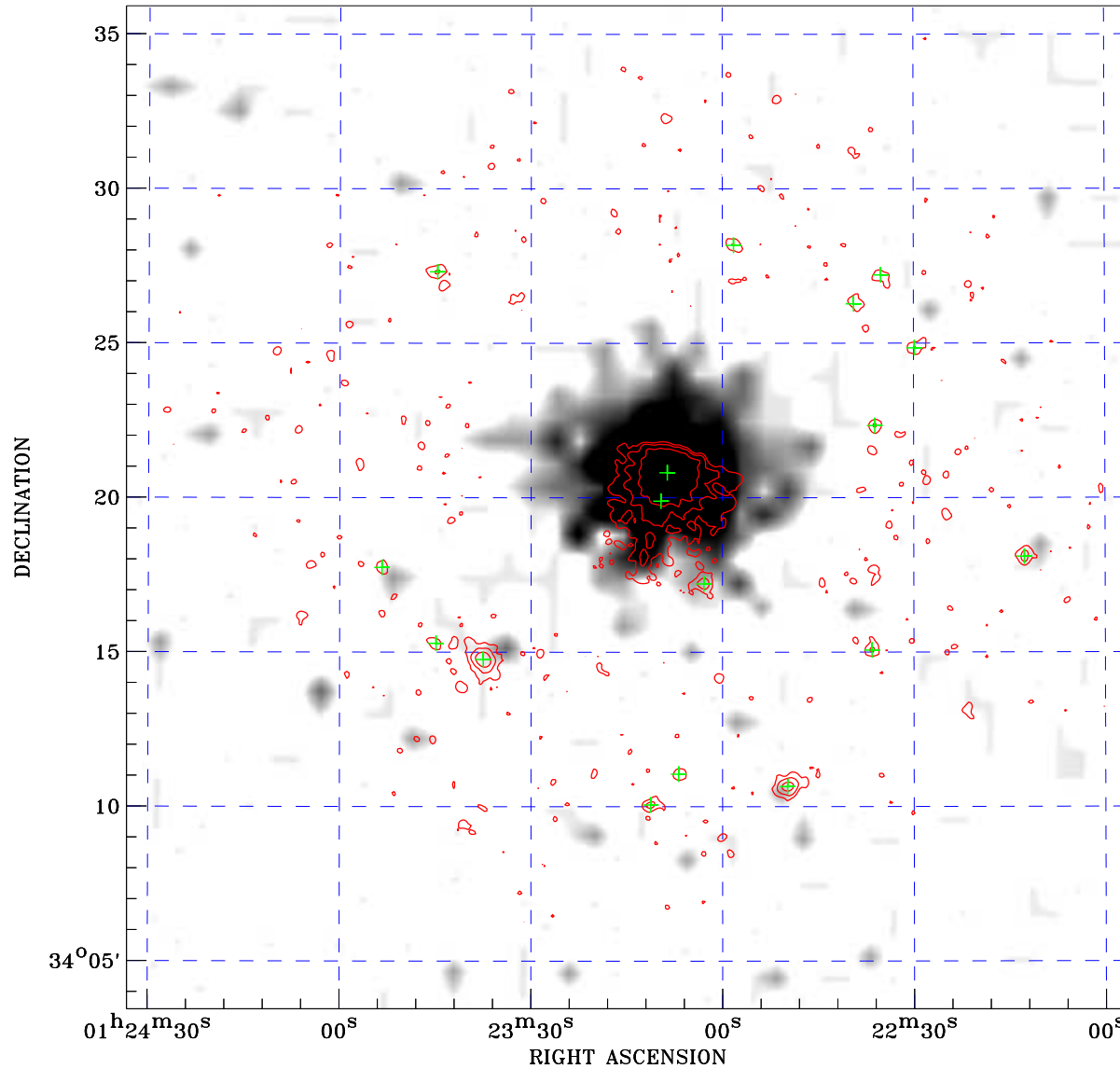



# PDF XMM RASS image ACDS V10.0



RASS image gray scale (Log) :  
  
 < 2.211E-03 > 1.708E-02  
 (counts s<sup>-1</sup>)

⊙ Epic image contour  
 levels at 2, 7 and 30σ  
 + Detected Epic sources

Principal Investigator :  
 Dr Eric Perlman

XMM target name :  
 1ES0120+340

Observation ID :  
 0094382101

Epic image :  
 $\alpha$  : 01 23 14.84  
 $\delta$  : +34 19 41.7  
 Energy band : 0.2–12.0 keV  
 MOS1 : 5754 s  
 MOS2 : 5806 s  
 PN : 4996 s

Contour levels (counts) :  
 2σ :3.285E-01 7σ :9.792E-01  
 30σ :3.973E+00

RASS image :  
 Observation : 931104p  
 Instrument : PSPCC  
 $\alpha$  : 01 32 21.45  
 $\delta$  : +33 35 58.8

XMM SSC  
 Apr 24 04:41:35 2019