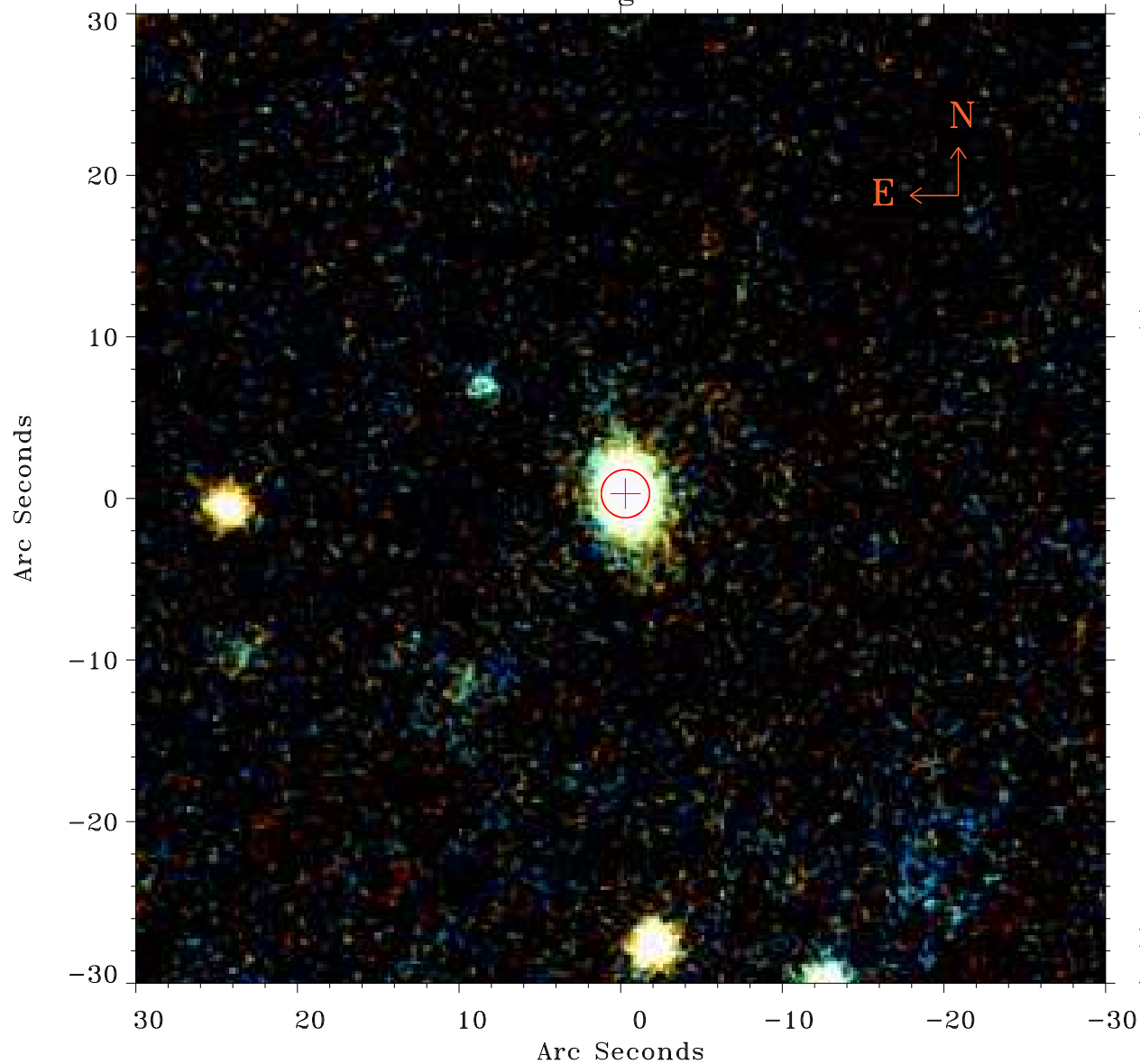


EPIC source finding chart ACDS V10.0



Principal Investigator :

Dr Bernd Aschenbach

XMM target name :

NGC 7158

OBS ID : 103860501

Source number : 2

X-ray coordinates :

α : 21 57 46.77

δ : -11 37 52.3

Center coordinates :

α : 21 57 46.78

δ : -11 37 52.4

Plate reference :

Origin : PanSTARRS-DR1

Color coding :

z band ●

(z+g)/2 ●

g band ●

Error:

R90 : 1.5 arsec

XMM SSC

Apr 23 20:05:50 2019