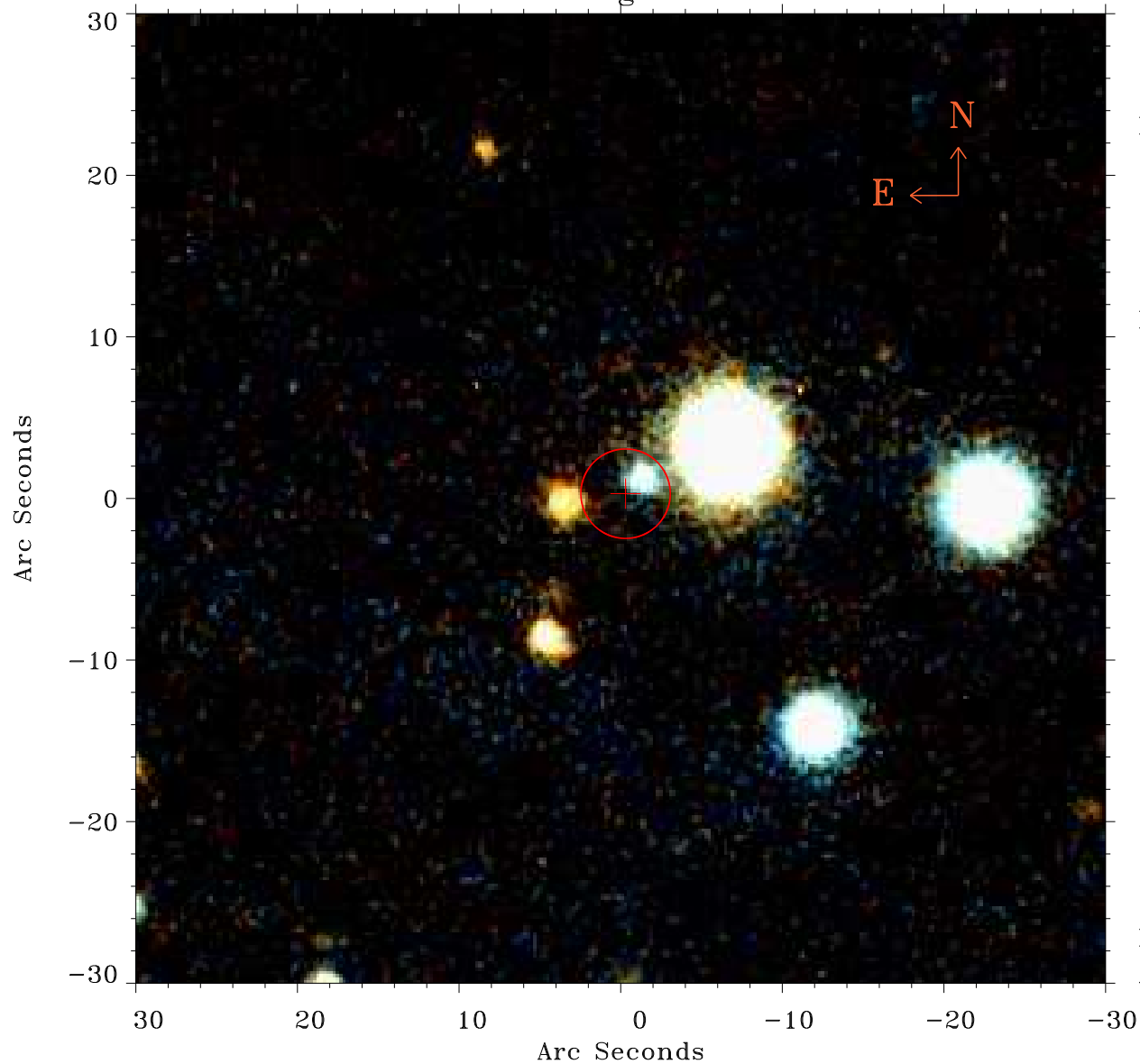


# EPIC source finding chart ACDS V10.0



Principal Investigator :

Dr Bernd Aschenbach

XMM target name :

NGC 7331

OBS ID : 103861301

Source number : 9

X-ray coordinates :

$\alpha$  : 22 37 38.63

$\delta$  : +34 22 23.8

Center coordinates :

$\alpha$  : 22 37 38.64

$\delta$  : +34 22 23.7

Plate reference :

Origin : PanSTARRS-DR1

Color coding :

z band ●

(z+g)/2 ●

g band ●

Error:

R90 : 2.8 arsec

XMM SSC

Apr 27 12:46:01 2019