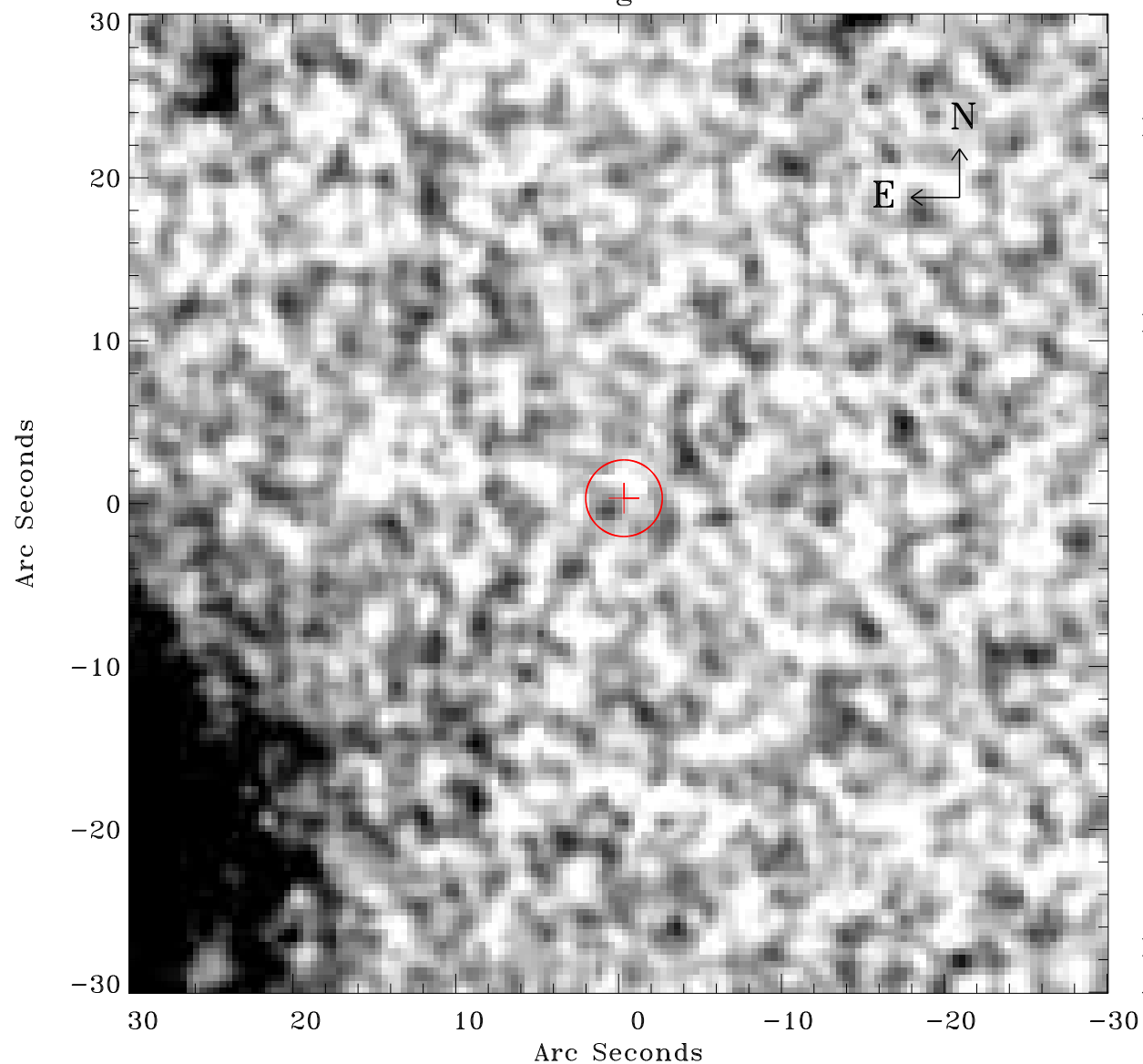


# EPIC source finding chart ACDS V10.0



Principal Investigator :

Dr Bernd Aschenbach

XMM target name :

ESO 113- G 010

OBS ID : 103861601

Source number : 3

X-ray coordinates :

$\alpha$  : 01 05 11.18

$\delta$  : -58 25 47.4

Center coordinates :

$\alpha$  : 01 05 11.17

$\delta$  : -58 25 47.3

Plate reference :

Origin : CDS HIPs Network

Plate : MAMA srcj

Pixel : 0.40 "/pix

Error circle :

$R_{90}$  (") : 2.3

XMM SSC

Apr 29 14:57:32 2019